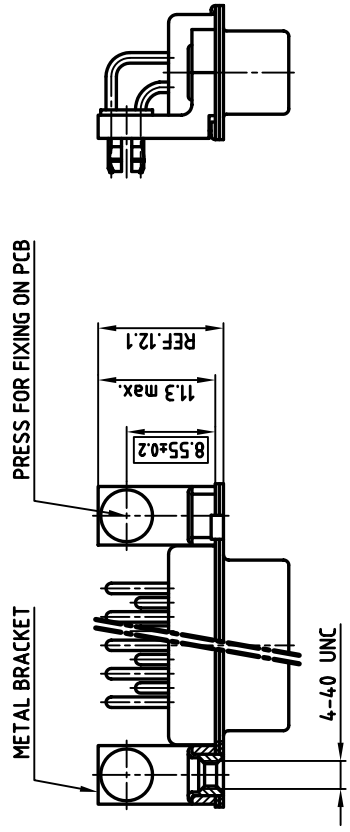
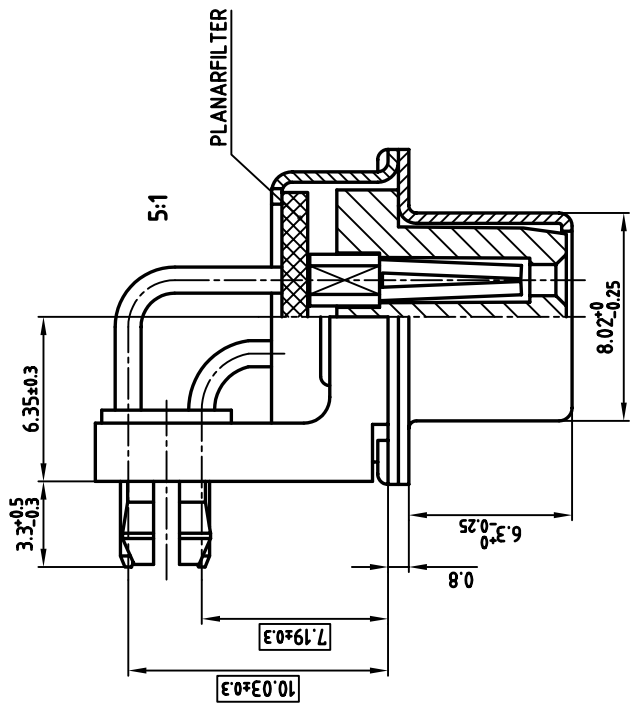
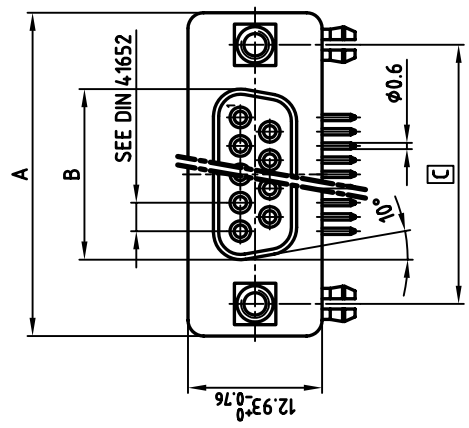


used for: D-SUB FILTER



- NOTES:**
- METALSHELLS/-BRACKETS: STEEL; TIN PLATED
 - INSULATORS: PPTP GF UL 94 V-0
 - CONTACTS: COPPER ALLOY
 - PLATING: HARD GOLD OVER NICKEL
 - PCB-SNAP: COPPER ALLOY; TIN PLATED
PCB-HOLE: $\phi 3.1 \pm 0.1$
PCB THICKNESS 1.6mm
 - CAPACITANCE: 1300pF $\pm 20\%$
 - = CRITICAL DIMENSION: SPC

Directive 2002/95/EC
RoHS
Compliant

tolerance		scale: 2:1 (5:1)	
material:		material: SEE NOTES	
1997	date	name	title:
drawn	04.11.	Barcinski	D-SUB FEMALE 90°
appd.	04.11.	Mickenbecker	0.318inch 9-37pos.
norm	DIN 41652		with threaded insert, metal bracket and clip
6-old			[CAD/ REL.13] DIN-A
rev. description		date	
name		product no:	
		24K11W0A	
		sh: 1/1	

DO NOT ALTER CAD DRAWING BY HAND
OWNERSHIP AND COPYRIGHT OF CONEC GMBH
WRITTEN PERMISSION
BE PASSED ON TO A THIRD PARTY WITHOUT
REPRODUCED IN ANY WAY, AND MAY NOT
THIS DRAWING MAY NOT BE COPIED OR

POS.	A -0.76	B -0.25	C	PART-NO.
9	31.19	16.46	25.00 ^{+0.12} _{-0.13}	242A17660X
15	39.52	24.79	33.30 ^{+0.15} _{-0.1}	242A17670X
25	53.42	38.50	47.04 ^{+0.13}	242A17680X
37	69.70	54.96	63.50 ^{+0.13}	242A17690X



SEE TABLE