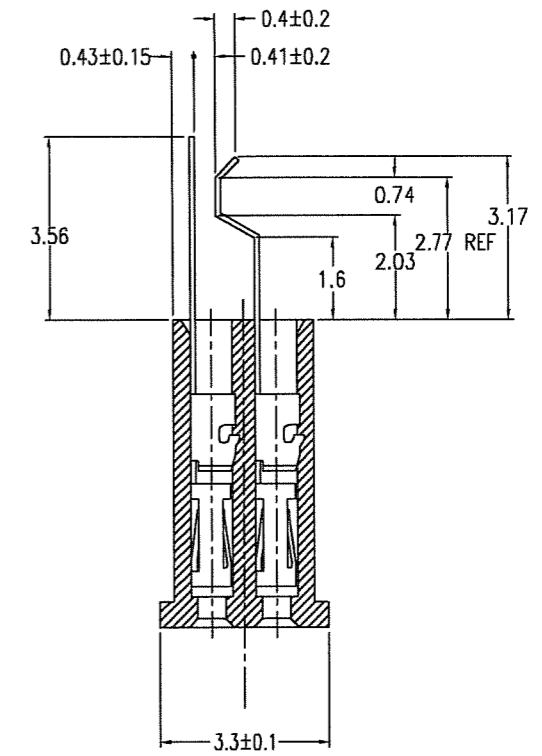
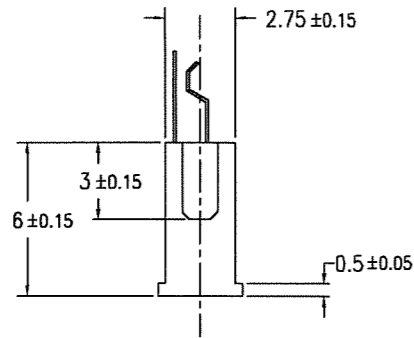
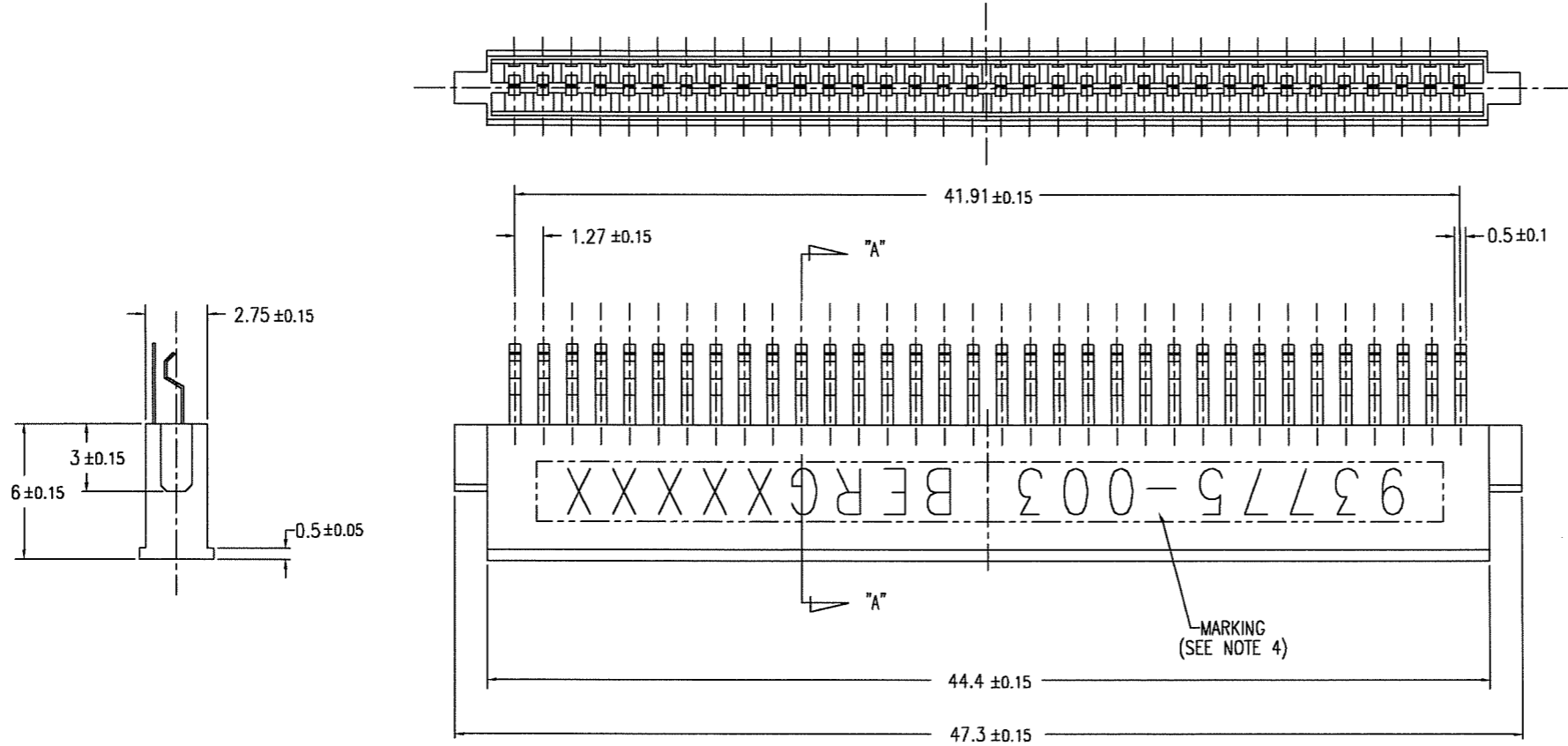
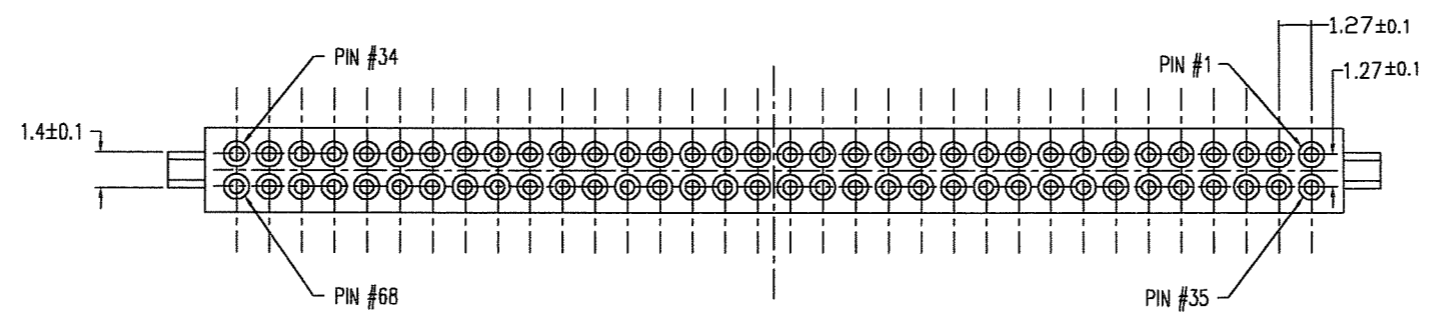


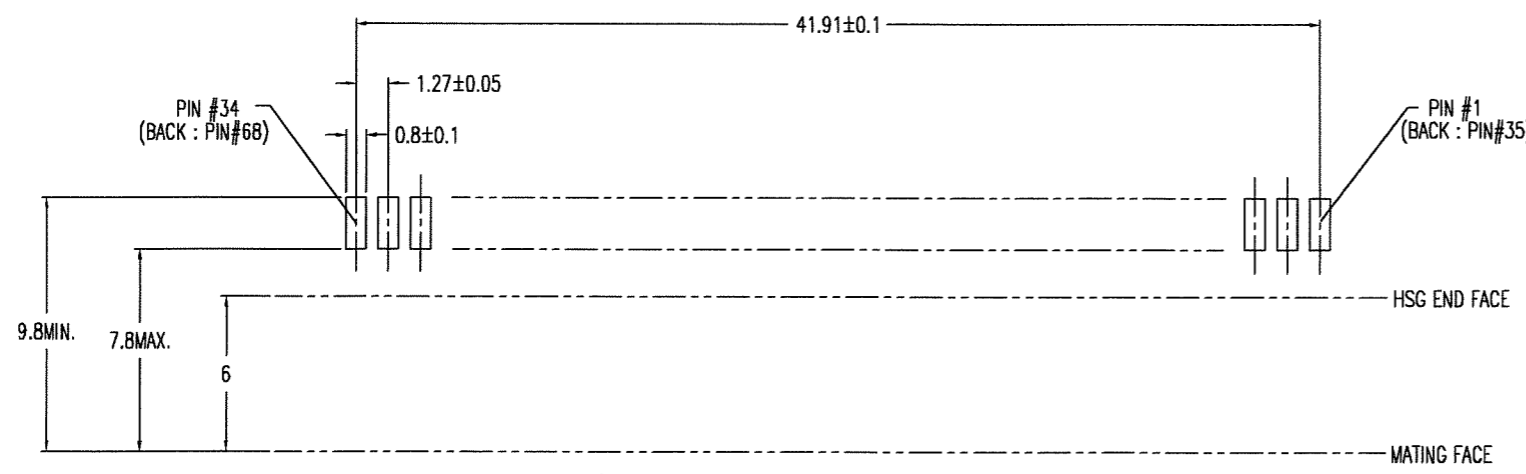
PRODUCT NO.	HOUSING COLOR	PACKAGING	FINISH
93775-003	BLACK	STANDARD TRAY	SEE NOTE ①
93775-003LF	BLACK	STANDARD TRAY	SEE NOTE ⑥



SECTION "A"-"A"



- NOTE
- MATERIAL
CONTACT : BeCu 0.08t
HSG. : LCP UL94V-0
FINISH(PLATING)
CONTACT : ALL OVER ----- Ni UNDER 0.5 μm THK.MIN.
SELECTIVE ----- Au PLATING 0.1 μm THK.MIN.
OVER Pd-Ni PLATING.
SOLDER TAIL ----- TIN LEAD 2.5 μm THK. MIN.
 - FOR MATING MALE CONN.(HDR./EJECTOR HDR.)
TO APPLY 68POS. MALE CONN.(HDR./EJECTOR HDR.) BASED ON
JEIDA AND PCMCIA SPECIFICATION
 - GENERAL TOLERANCE : ±0.25
 - MARKING: "93775-003 BERGXXXX" (XXXXX : LOT No.)
 - RECOMMENDED PWB THICKNESS : 0.34 TO 0.6
 - 93775-003LF FINISH(PLATING)
CONTACT : ALL OVER ----- Ni UNDER 0.5 μm THK.MIN.
SELECTIVE ----- Au PLATING 0.1 μm THK.MIN.
OVER Pd-Ni PLATING.
SOLDER TAIL ----- Au FLASH
- △ 7 THIS LF SUFFIX PRODUCT MEETS EUROPEAN UNION DIRECTIVES
AND OTHER COUNTRY REGULATIONS AS DESCRIBED IN GS-22-00B.



△ RECOMMENDED PWB FOOTPRINT LAYOUT

mat'l. code		surface		tolerance		projection		product family		CODE	
---		ISO 1302		ISO 406		mm		5B1F-PCMCIA RECEPTACLE		JP	
ISO 1101		tolerances unless otherwise specified		0.XX ±0.25		mm		JEIDA/PCMCIA			
1		REVISED		KS		4/20/93		68 POS. RECEPTACLE			
2		REVISED(ASSIGNED_P/N)		KS		1/31/94					
A		RELEASED		J40064		KS		2/28/94		0'±X'	
B		REVISED		J06-0159		R.S		4/18/06		dr	
C		REVISED		J06-0354		R.S		9/6/06		engr	
								R.SHOUJI		9/6/06	
								chr		9/6/06	
								appd		9/9/06	
sheet		revision		C				FCJ		dwg no	
index		sheet		1				93775		sheet 1 of 1 size	
								type		Product Customer Drawing	
								Rev.		C	

FCI CONFIDENTIAL

FCIconnect.cpf

This document is the property of and embodies CONFIDENTIAL and PROPRIETARY information of FCI. No part of this information shall be disclosed in any way or by any means without the written consent of FCI. Copyright FCI.