

1422 Series Two Door Wallmount Enclosures - NEMA 12

Continuous Hinge

Industrial Enclosures
Wallmount Enclosures



**Inner
Panel
Included**



Application

- Designed to house electrical, electronic, hydraulic or pneumatic controls and instruments.
- Provides a degree of protection from falling dirt, dust, oil and water.

Standards

- UL 508 Type 12
- CSA Type 12
- **Complies with**
 - NEMA Type 12
 - IEC 60529, IP54

Construction

- Enclosures are formed 12 or 14 gauge steel, as noted.
- Smooth, continuously welded seams without knockouts, cutouts or holes.
- Body stiffeners are provided in enclosures 30" high or more for extra rigidity.
- Welded brackets provide for enclosure mounting.
- Gasketed overlapping doors eliminate the need for a center post.
- Continuously hinged doors may be removed by pulling the hinge pin.
- Doors are secured with a three point latch and operated with a key locking automotive type handle.
- Latch rods are equipped with rollers for easier door closing.
- Oil resistant gaskets are permanently secured.
- A removable 10 gauge inner panel is included in enclosures as noted.
- Smaller sizes include a 12 gauge inner panel.
- Collar studs are provided for mounting inner panels.
- A grounding stud is provided in the enclosure and a bonding stud is provided on the door.
- A literature pocket is provided for the inside of the door.

Finish

- Cover and enclosure are phosphatized and finished in recoatable smooth ANSI 61 gray powder coating on the outside, with white powder coating on the inside.
- Removable inner panel is finished in white powder coating.

Accessories

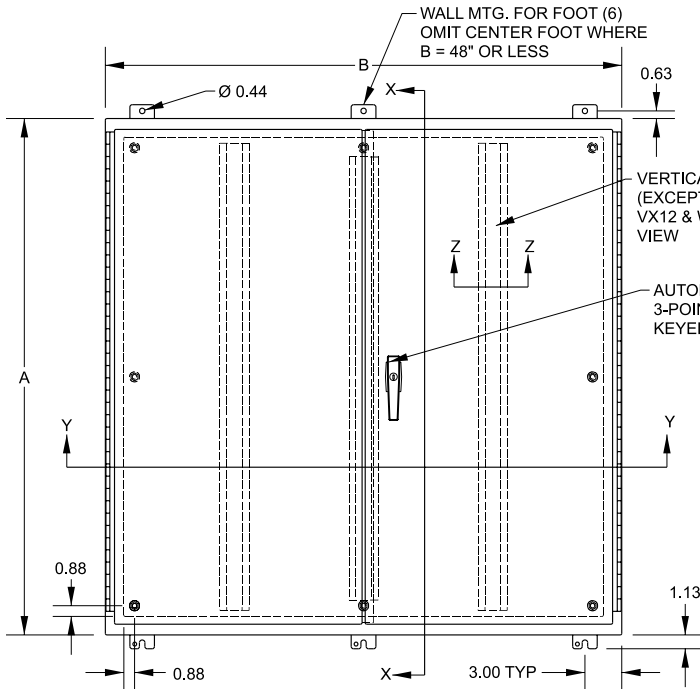
- Air conditioners...see page **387-405**
- Blowers...see page **406**
- Breather kits...see page **423**
- Door stop kits...see page **447**
- Drip shield kits...see page **447**
- Enclosure stabilizers...see page **451**
- Filter fans...see page **408-413**
- Floor stand kits...see page **448**
- Gland plates...see page **441**
- Heaters...see page **418-420**
- Light kit...see page **447**
- Louvered ventilating plates
...see page **450**
- Thermostats...see page **421**
- Window kits...see page **444**

1422 Series Two Door Wallmount Enclosures - NEMA 12

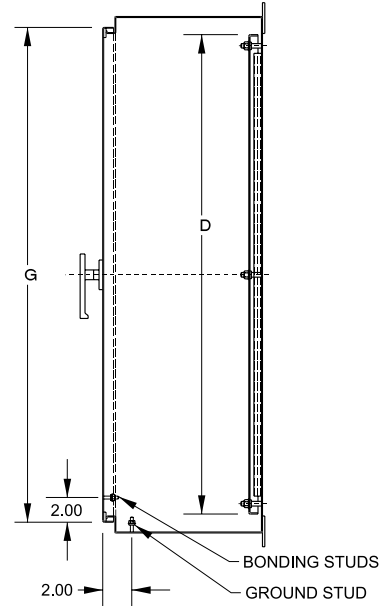
Continuous Hinge

Industrial Enclosures

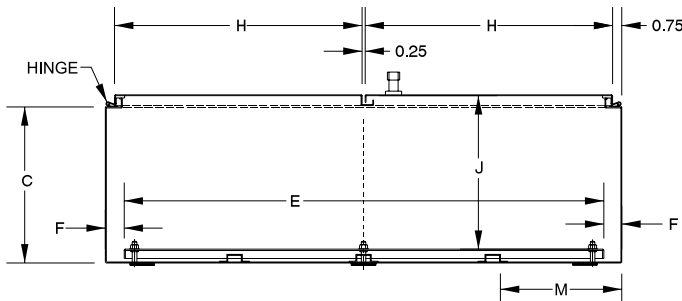
Wallmount Enclosures



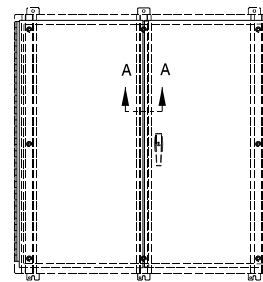
Front View



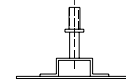
Side View



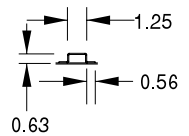
Section Y-Y



Stiffener Layout
1422UX12 & 1422WW12



Section A-A
1422VX12 & 1422WW12



Section Z-Z
(Except 1422VX12 &
1422WW12)

Part No.	A	B	C	Body Gauge	Panel Gauge	Panel Size		D	E	F	G	H	J	Ship Wt. lbs.
1422P8	24.00	42.00	8.00	14	12	21	39	1.5	22.25	20.13	7.96	79		
1422PW8	24.00	48.00	8.00	14	12	21	45	1.5	22.25	23.13	7.96	92		
1422P10	24.00	42.00	10.00	14	12	21	39	1.5	22.25	20.13	9.96	101		
1422R10	30.00	42.00	10.00	14	12	27	39	1.5	28.25	20.13	9.96	112		
1422RW10	30.00	48.00	10.00	14	12	27	45	1.5	28.25	23.13	9.96	115		
1422RX10	30.00	60.00	10.00	14	12	27	57	1.5	28.25	29.13	9.96	142		
1422UV12	36.00	42.00	12.00	14	12	33	39	1.5	34.25	20.13	11.96	134		
1422UW12	36.00	48.00	12.00	14	12	33	45	1.5	34.25	23.13	11.96	230		
1422UX12	36.00	60.00	12.00	14	12	33	57	1.5	34.25	29.13	11.96	181		
1422VV12	42.00	42.00	12.00	14	12	39	39	1.5	40.25	20.13	11.96	152		
1422VW12	42.00	48.00	12.00	14	12	39	45	1.5	40.25	23.13	11.96	161		
1422VX12	42.13	60.06	12.69	12	10	38	56	2.0	40.25	29.13	11.96	202		
1422WW12	48.13	48.06	12.69	12	10	44	44	2.0	46.25	23.13	11.96	350		

When B=	M=
42	9.88
48	11.38
60	14.38