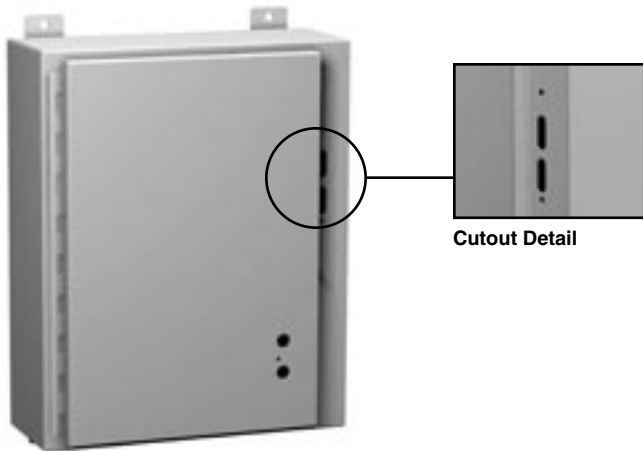


1447S Single Door Disconnect Enclosures - NEMA 12, 13

ABB Controls, Allen Bradley, Cutler Hammer, General Electric, Siemens I-T-E Max-Flex™, Square D

Disconnect



Cutout Detail



Wallmount Enclosures

Application

Designed to house the following safety disconnect equipment:

- **ABB Controls** flange-mounted variable depth operating mechanism for disconnect switches and circuit breakers. Also cable version for circuit breakers.
- **Allen Bradley** 1494V variable depth flange mounted disconnect switches and circuit breaker operators. Will not accept Allen Bradley 1494F disconnect switches, 1494D circuit breaker operators.
- **C-H Westinghouse** C361 flange mounted variable depth operating mechanism with disconnect switches and C371 flange mounted variable depth operating mechanisms for circuit breakers. Also Flex-Shaft™ handle mechanisms for circuit breakers.
- **General Electric** Type STDA flange handles and variable depth operating mechanism for disconnect switches and circuit breakers. Also SpectraFlex™ cable operators for circuit breakers.
- **Siemens I-T-E Max-Flex™** flange mounted variable depth handles for disconnect switches and circuit breakers.
- **Square D** class 9422 disconnect switches with flange mounted variable depth operating mechanisms or cable mechanisms and Class 9422 flange-mounted variable depth operating mechanisms or cable mechanisms for circuit breakers. Will not accept Square D Class 9422 bracket-mounted disconnect devices, 9422TG1 or TG2 devices.

Standards

- UL 508 Type 12, 13
- CSA Type 12, 13
- **Complies with**
 - NEMA Type 12 and 13
 - JIC EGP-1-1967
 - IEC 60529, IP54
- Appropriate components are required to maintain these standards.

Construction

- Formed 14-gauge steel.
- Continuously welded seams.
- Larger sizes include door and body stiffeners.
- Welded brackets provide for enclosure mounting.
- Formed lip on door and enclosure exclude flowing liquids and contaminants.
- Cutouts and holes are provided to suit the handle, operating mechanism and door closing mechanism.
- Continuously hinged doors may be removed by pulling the hinge pin.
- Latch pivots and cover interlock brackets are welded to the door.
- Cover latch bars for door handles are provided.
- Collar studs are provided for mounting inner panels.
- A removable 12 gauge inner panel is included.
- Oil resistant gaskets are permanently secured and mechanically retained.
- A bonding stud is provided on the door and a grounding stud is provided in the enclosure.
- A literature pocket is provided.

Note:

- Disconnects, operating mechanisms and door hardware are not provided with the enclosure, and must be ordered separately from the manufacturer.
- Enclosures with an "A" dimension under 40" require 2 point door closing hardware.
- Enclosures with an "A" dimension 40" or more require 3 point door closing hardware.

Finish

- Door and enclosure are phosphatized and finished in ANSI 61 gray recoatable powder coating on the outside.
- Enclosure interior is finished in white powder coating.
- Inner panel is finished in white powder coating.

Accessories

- Additional inner panels...see page **433**
- Air conditioners...see page **389**
- Blowers...see page **406**
- Breather kits...see page **423**
- Doorstop kits...see page **447**
- Drip shield kits...see page **447**
- Enclosure stabilizers...see page **451**
- Filter fans...see page **413-414**
- Floor stand kits...see page **448**
- Heaters...see page **418-420**
- Thermostats...see page **421**
- Window kits...see page **444**

Technical references and DXF downloads available at www.hammf.com

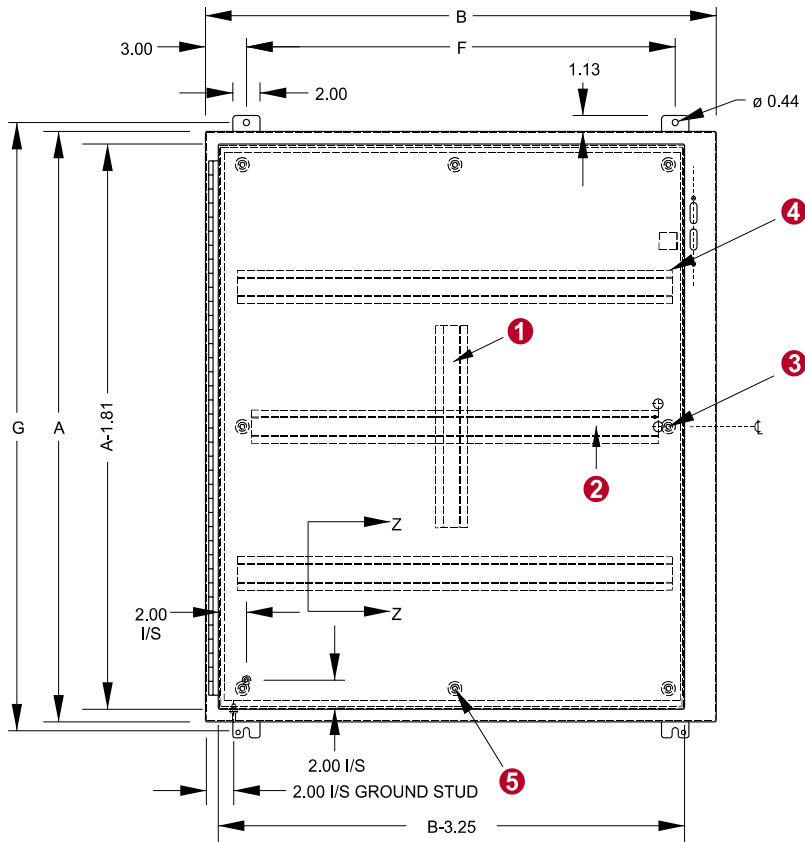
All dimensions in inches unless specified otherwise

1447S Single Door Disconnect Enclosures - NEMA 12, 13

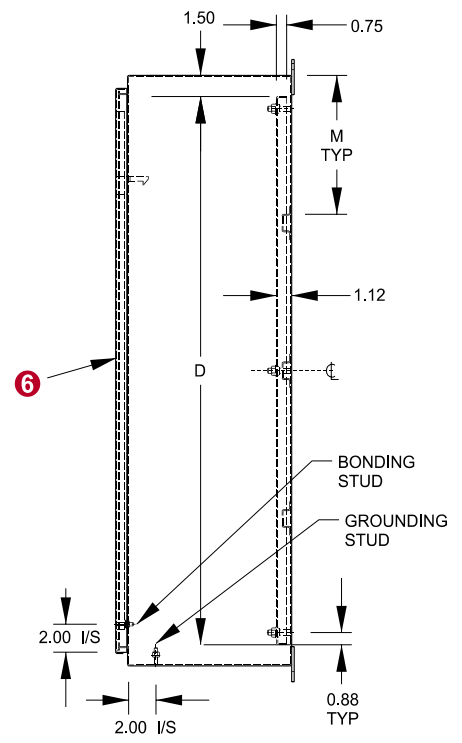
ABB Controls, Allen Bradley, Cutler Hammer, General Electric, Siemens I-T-E Max-Flex™, Square D

Disconnect

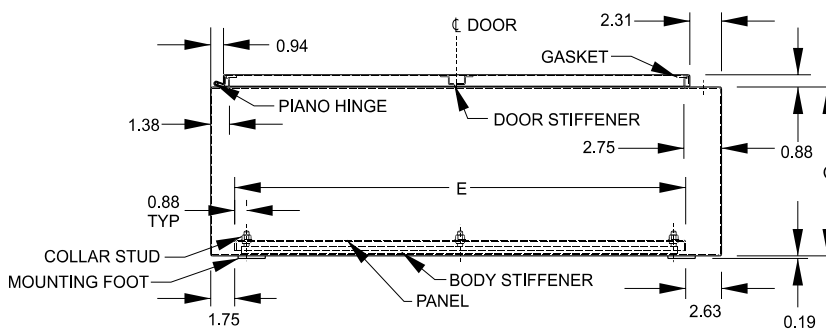
Walmount Enclosures



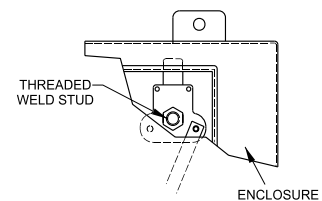
Front View



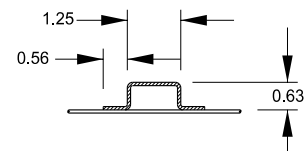
Side View



Top View



Closing Mechanism
Catches top of enclosure only



Section Z-Z

When A=	M=
36	9.00
42	9.88
48	11.38
60	14.38

- ① Vertical body stiffener req'd on 1447SG only.
- ② Omit center body stiffener if A is less than 41".
- ③ Omit 2 middle studs if A is less than 31".
- ④ Omit body stiffeners if B is 28" or less.
- ⑤ Omit 2 middle studs if B is less than 32".
- ⑥ Omit door stiffener if B is 32" or less except if AxB is 42"x31.38".

1447S Single Door Disconnect Enclosures - NEMA 12, 13

ABB Controls, Allen Bradley, Cutler Hammer, General Electric, Siemens I-T-E Max-Flex™, Square D

Disconnect

Wallmount Enclosures

Part No.	Panel Size					Mounting Center		Ship Wt. lbs	Center Stiffener ²
	A	B	C	D	E	F	G		
1447SA8	20	21.38	8	17	17	15.38	21.25	51	N
1447SB8	24	21.38	8	21	17	15.38	25.25	60	N
1447SC8	24	25.38	8	21	21	19.38	25.25	71	N
1447SD8	30	21.38	8	27	17	15.38	31.25	74	N
1447SE8	30	25.38	8	27	21	19.38	31.25	87	N
1447SF8	36	25.38	8	33	21	19.38	37.25	98	N
1447SG8	36	31.38	8	33	27	25.38	37.25	121	N
1447SH8	42	31.38	8	39	27	25.38	43.25	135	I
1447SJ8	42	37.38	8	39	33	31.38	43.25	154	I
1447SK8	48	37.38	8	45	33	31.38	49.25	172	I
1447SL8	60	37.38	8	57	33	31.38	61.25	248	I
1447SA10	20	21.38	10	17	17	15.38	21.25	52	N
1447SB10	24	21.38	10	21	17	15.38	25.25	63	N
1447SC10	24	25.38	10	21	21	19.38	25.25	71	N
1447SD10	30	21.38	10	27	17	15.38	31.25	80	N
1447SE10	30	25.38	10	27	21	19.38	31.25	90	N
1447SF10	36	25.38	10	33	21	19.38	37.25	100	N
1447SG10	36	31.38	10	33	27	25.38	37.25	126	N
1447SH10	42	31.38	10	39	27	25.38	43.25	143	I
1447SJ10	42	37.38	10	39	33	31.38	43.25	193	I
1447SK10	48	37.38	10	45	33	31.38	49.25	180	I
1447SL10	60	37.38	10	57	33	31.38	61.25	255	I
1447SE12	30	25.38	12	27	21	19.38	31.25	100	N
1447SG12	36	31.38	12	33	27	25.38	37.25	130	N
1447SH12	42	31.38	12	39	27	25.38	43.25	150	I
1447SJ12	42	37.38	12	39	33	31.38	43.25	200	I
1447SK12	48	37.38	12	45	33	31.38	49.25	220	I
1447SL12	60	37.38	12	57	33	31.38	61.25	265	I
1447S46L12	60	37.38	12	57	34.5	31.38	61.25	265	I
1447SG16	36	31.38	16	33	27	25.38	37.25	150	N
1447SK16	48	37.38	16	45	33	31.38	49.25	200	I
1447SL16	60	37.38	16	57	33	31.38	61.25	265	I

² Center stiffener; N = Not Included I = Included

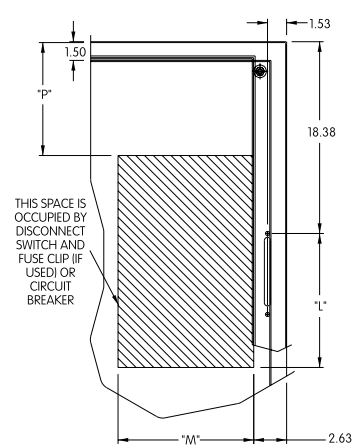
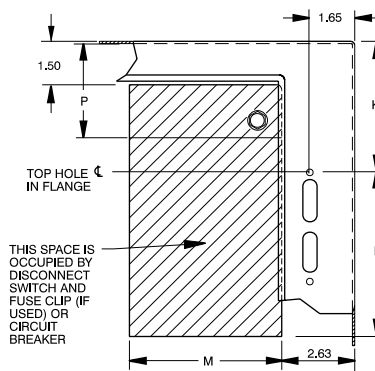
Space Occupied by Disconnect

Note: "K" = 4.75 when "C" = 8.00
 "K" = 7.09 when "C" = 10.00
 "K" = 11.62 when "C" = 12.00
 "K" = 11.62 when "C" = 16.00
 "K" = 18.38 for 1447S46L12
 "P" = Wiring Space

Disconnects will occupy space on panel shown by dimensions "K", "L" and "M".

Wiring space "P" is available when disconnect is installed in the enclosure.

*The disconnect information and space occupied tables based on data supplied by disconnect manufacturer's bulletins. Hammond Manufacturing not responsible for dimensional accuracy.



1447S46L12 only
1494V-H2 and ITE PHOHN
Operating Handle

1447S Single Door Disconnect Enclosures - NEMA 12, 13

Selection Guide

Disconnect
Wallmount Enclosures

Hammond Series		1447S
ABB Controls	Disconnect Switch	Flange operated switch (fusible or non-fusible)
		Shaft: 8-12" dp enclosures, use DSFHS-12; 16" dp enclosures, use DSFHS-17
		Handle: DSFHN-HS12
	Circuit Breaker	Door Hardware: 2 pt. Latching, use KDH2R; 3 pt. Latching, use KDH3R and FH-3RL
		Circuit breaker: ABB
		Operating Mechanism: see ABB chart
Allen Bradley	1494V Flange Disconnect Switch	Disconnect switch and operating mechanism: Bulletin 1494V
		Handle: Bulletin 1494V-H1 (except for Hammond part # 1447S46L12, use 1494V-H2)
		Connecting rod: 8-10" dp enclosures, use 1494V-RA1; 12-16" dp enclosures, use 1494V-RA2 (except for Hammond part # 1447S46L12, use 1494V-RB2 (2))
	1494V Flange Circuit Breaker	Trailer fuse block kit (if required): Bulletin 1494V
		Fuse kit (if required)
		Line and load connectors (if required)
Cutler Hammer	Type C361 Disconnect Switch	Disconnect switch and operating mechanism
		Handle: C361-H1 or H3
	Type C371 Circuit Breaker	Door Hardware: 2 pt. Latching, use C361KJ4 or KJ6; 3 pt. Latching, use C361KJ4 or KJ6, and C361KR
		Circuit breaker: C-H Westinghouse
	C-H Westinghouse Circuit Breaker w/FlexShaft	Operating mechanism
		Handle: 150 amp, use C371H1 or H3; 250-600 amp, use C371H5 or H7
General Electric	Type STDA Flange Disconnect Switch	Disconnect switch Type QMR or QMW
		Handle: STDA1 or STDA2
		Fuse kit (if required)
	Type STDA Flange Circuit Breaker	Variable depth operating mechanism
		Door Hardware: 2 pt. Latching, use TDV-1; 3 pt. Latching, use TDV-1 and TDV-3
		Circuit breaker
Circuit Breaker w/SpectraFlex	Handle: STDA1 or STDA2	
	Variable depth operating mechanism	
	Door Hardware: 2 pt. Latching, use TDV-1; 3 pt. Latching, use TDV-1 and TDV-3	
I-T-E Siemens	Max-Flex Flange Disconnect Switch	Circuit breaker
		Complete Flex-Shaft handle mechanism
		Door Hardware: 2 pt. Latching, use C361KJ4 or KJ6; 3 pt. Latching, use C361KJ4 or KJ6, and C361KR
	Max-Flex Flange Circuit Breaker	Disconnect switch: MCS
		Fuse Kit (if required)
		Handle: Flange mount FHOHS
Square D	Class 9422 Disconnect Switch	Switch operator mechanism
		Operating cable (standard 36.0")
		Door Hardware: 2 pt. Latching, use DKR2; 3 pt. Latching, use DKR3
	Class 9422 Circuit Breaker	Circuit breaker
		Pressure wire connectors
		Handle: Flange mount FHOH (except for Hammond part # 1447S46L12, use FHOHN)
Class 9422 "T" Disconnect Switch w/ cable mechanism	Circuit breaker operator mechanism	
	Operating cable: 125-600 amp, use 36"; 800 amp, use 48"	
	Door Hardware: 2 pt. Latching, use DKR2; 3 pt. Latching, use DKR3	
Circuit Breaker w/ cable mechanism	Disconnect switch and operating mechanism 9422	
	Handle: Type A-1	
	Door Hardware: 2 pt. Latching, use 9423-M4 or M9; 3 pt. Latching, use 9423-M4 or M9, and 9423-M3	
Circuit Breaker w/ cable mechanism	Circuit breaker	
	Operating mechanism: Class 9422	
	Handle: Type A-1	
Circuit Breaker w/ cable mechanism	Door Hardware: 2 pt. Latching, use 9423-M4 or M9; 3 pt. Latching, use 9423-M4 or M9, and 9423-M3	
	Disconnect switch and operating mechanism 9422, Type T	
	Handle: Type A-1	
Circuit Breaker w/ cable mechanism	Cable mechanism: Class 9422 CFT O - 3, 5, or 10 foot	
	Door Hardware: 2 pt. Latching, use 9423-M4; 3 pt. Latching, use 9423-M4 or M9, and 9423-M3	
	Circuit breaker: Square D	
Circuit Breaker w/ cable mechanism	Handle: Type A-1	
	Door Hardware: 2 pt. Latching, use 9423-M4; 3 pt. Latching, use 9423-M4 or M9, and 9423-M3	

 Technical references and DXF downloads available at www.hamfmfg.com

All dimensions in inches unless specified otherwise

Quality Enclosures. Service Excellence.

1447S Single Door Disconnect Enclosures - NEMA 12, 13

ABB Controls, Allen Bradley, Cutler Hammer, General Electric, Siemens I-T-E Max-Flex™, Square D

Disconnect

ABB Controls

ABB Controls Disconnect Switches (Flange Mounted Operators)

Fits Enclosure Depth				ABB Switch Number	Amp Rating	Fuse Clip	Fuse Class	Space Occupied		When K=4.75	When K=7.09	When K=11.62
8	10	12	16					L	M	P	P	P
•	•	•	•	OETL-NF30-F	30A	No Fuse	—	4.45	3.78	6.41	8.75	13.28
•	•	•	•	OETL-NF60-F	60A	No Fuse	—	4.86	3.78	6.22	8.56	13.09
•	•	•	•	OETL-NF100-F	100A	No Fuse	—	4.86	4.78	5.66	8.00	12.53
	•	•	•	OETL-NF175-F	175A	No Fuse	—	7.30	6.49	—	5.75	10.28
	•	•	•	OETL-NF200-F	200A	No Fuse	—	7.36	7.28	—	5.75	10.28
•	•	•	•	OESA-F30J6-F	30A	30A-600V	J	4.28	6.58	4.73	7.07	11.61
•	•	•	•	OESA-F60J6-F	60A	60A-600V	J	4.28	6.26	4.73	7.07	11.61
•	•	•	•	OESA-F100J6-F	100A	100A-600V	J ¹	6.54	7.65	4.30	6.64	11.17
				200A ²								

¹ J type fuse clips are standard. If 600 V Type "T" fuse clips are desired order T type fuse adaptor kit.

² 200 A available by using non-fusible 200A switch and a trailing fuse block. (consult ABB)

Wallmount Enclosures

ABB Controls Circuit Breaker (Flange Mounted Operators)

Fits Enclosure Depth				ISOMAX Circuit Breaker	Amp Rating	Operating Mechanism	Space Frame Type	Space Occupied		When K=4.75	When K=7.09	When K=11.62
8	10	12	16					L	M	P	P	P
•	•	•	•	S1N100TL	100A	K2FHD-M	S1	5.30	4.60	5.26	7.60	12.13
	•	•	•	S3N150TW	150A	K3FHD-M	S3	6.67	5.02	—	7.00	11.53
	•	•	•	S3N225TW	225A	K3FHD-M	S3	6.67	5.02	—	7.00	11.53
	•	•	•	S4N250BW	250A	K4FHD-M	S4	8.45	5.02	—	5.47	10.00
	•	•	•	S5N400TW	400A	K5FHD-M	S5	8.45	6.40	—	5.47	10.00
		•	•	S6N600TW	600A	K6FHD-M	S6	8.33	10.00	—	—	9.33
		•	•	S6N800TW	800A	K6FHD-M	S6	8.33	10.00	—	—	9.33

Charts reference Space Occupied by Disconnect Drawing.

1447S Single Door Disconnect Enclosures - NEMA 12, 13

ABB Controls, Allen Bradley, Cutler Hammer, General Electric, Siemens I-T-E Max-Flex™, Square D

Disconnect

Walmart Enclosures

Allen Bradley

Allen Bradley 1494V Disconnect Switches

Fits Enclosure Depth				Allen Bradley Type Number	Amp Rating	Fuse Clip	Fuse Class	Space Occupied		When K=4.75	When K=7.09	When K=11.62
8	10	12	16					L	M ¹	P	P	P
•	•	•	•	DS30	30A	No Fuse	—	3.88	6.62	2.88	5.25	9.75
•	•	•	•	DS30	30A	30A-250V	H,K,R	5.25	6.62	2.88	5.25	9.75
•	•	•	•	DS30	30A	30A-600V	H,K,R	8.00	6.62	2.88	5.25	9.75
•	•	•	•	DS30	30A	30A-600V	J	5.25	6.62	2.88	5.25	9.75
•	•	•	•	DS30	30A	60A-250V	H,K	6.00	6.62	2.88	5.25	9.75
•	•	•	•	DS30	30A	60A-600V	H,K	8.50	6.62	2.88	5.25	9.75
•	•	•	•	DS30	30A	60A-600V	J	5.38	6.62	2.88	5.25	9.75
•	•	•	•	DS60	60A	No Fuse	—	3.88	6.62	2.75	5.12	9.62
•	•	•	•	DS60	60A	60A-250V	H,K,R	6.00	6.62	2.75	5.12	9.62
•	•	•	•	DS60	60A	60A-600V	H,K,R	8.50	6.62	2.75	5.12	9.62
•	•	•	•	DS60	60A	60A-600V	J	5.38	6.62	2.75	5.12	9.62
•	•	•	•	DS60	60A	30A-600V	H,K,R	8.00	6.62	2.75	5.12	9.62
•	•	•	•	DS60	60A	100A-250V	H,K	8.50	6.62	2.75	5.12	9.62
•	•	•	•	DS60	60A	100A-600V	H,K	10.50	6.62	2.75	5.12	9.62
•	•	•	•	DS60	60A	100A-600V	J	7.25	6.62	2.75	5.12	9.62
•	•	•	•	DS100 ²	100A	No Fuse	—	3.88	6.62	—	5.12	9.62
•	•	•	•	DS100 ²	100A	100A-250V	H,K,R	8.12	6.62	—	5.12	9.62
•	•	•	•	DS100 ²	100A	100A-600V	H,K,R	10.12	6.62	—	5.12	9.62
•	•	•	•	DS100 ²	100A	100A-600V	J	6.88	6.62	—	5.12	9.62
•	•	•	•	DS100 ²	100A	60A-600V	H,K,R	10.12	6.62	—	5.12	9.62
•	•	•	•	DS100 ²	100A	60A-600V	J	8.88	6.62	—	5.12	9.62
•	•	•	•	DS200 ²	200A	No Fuse	—	4.75	7.88	—	—	8.12
•	•	•	•	DS200 ²	200A	200A-250V	H,K,R	10.88	7.88	—	—	8.12
•	•	•	•	DS200 ²	200A	200A-600V	H,K,R	13.38	7.88	—	—	8.12
•	•	•	•	DS200 ²	200A	200A-600V	J	9.50	7.88	—	—	8.12
•	•	•	•	DS200 ²	200A	100A-600V	H,K,R	12.00	7.88	—	—	8.12
•	•	•	•	DS200 ²	200A	100A-600V	J	8.75	7.88	—	—	8.12
•	•	•	•	DS400 ³	400A	no fuse	—	10.75	10.88	—	—	—
•	•	•	•	DS400 ³	400A	400A-250V	H,K,R	16.12	10.88	—	—	—
•	•	•	•	DS400 ³	400A	400A-600V	H,K,R	19.12	10.88	—	—	—
•	•	•	•	DS400 ³	400A	400A-600V	J	14.62	10.88	—	—	—
•	•	•	•	DS600 ^{3,4}	600A	no fuse	—	10.75	10.88	—	—	—
•	•	•	•	DS600 ^{3,4}	600A	600A-250V	H,R	10.75	10.88	—	—	—
•	•	•	•	DS600 ^{3,4}	600A	600A-600V	H,R	10.75	10.88	—	—	—
•	•	•	•	DS600 ^{3,4}	600A	600A-600V	J	17.59	10.88	—	—	—

¹"M" dimension does not allow for auxiliary switches. ²Series B

³The 400 amp disconnect switch and the 600 amp switch will only fit catalog number 1447S46L12. Wire bend space of 12.12 inches is provided above disconnect when installed.

⁴"L" and "M" do not include separately mounted fuse blocks

Allen Bradley 1494V Circuit Breakers

Fits Enclosure Depth				Allen Bradley Type Number	Amp Rating	Fuse Clip	Fuse Class	Space Occupied		When K=4.75	When K=7.09	When K=11.62
8	10	12	16					L	M ¹	P	P	P
•	•	•	•	M40	15A-150A	C-H Westinghouse Circuit Breakers EHD,FD,FDB,FDC,HFD,HMCP	—	5.00	4.50 ¹	4.25	6.62	11.12
		•	•	M50	70A-250A	C-H Westinghouse Circuit Breakers JD,JDB,JDC,HJD,HMCP	—	9.75	4.75 ¹	—	—	10.62
		•	•	M60	100A-400A	C-H Westinghouse Circuit Breakers KD,KDB,DK,HKD,HMCP	—	9.69	6.12 ¹	—	—	10.50

¹"M" dimension does not allow for auxiliary switches. Charts reference Space Occupied by Disconnect Drawing.

1447S Single Door Disconnect Enclosures - NEMA 12, 13

ABB Controls, Allen Bradley, Cutler Hammer, General Electric, Siemens I-T-E Max-Flex™, Square D

Disconnect

Cutler Hammer

Cutler Hammer C361 Disconnect Switches

Fits Enclosure Depth				Hammer Type Number	Amp Rating	Fuse Clip	Fuse Class	Space Occupied		When K=4.75	When K=7.09	When K=11.62
8	10	12	16					L	M	P	P	P
•	•	•	•	C361NC	30A	No Fuse	—	5.75	7.43	3.44	5.75	10.31
•	•	•	•	C361SC21	30A	30A-250V	H, K, R	8.38	7.43	3.44	5.75	10.31
•	•	•	•	C361SC61	30A	60A-250V	H, K, R	8.38	7.43	3.44	5.75	10.31
•	•	•	•	C361SC61	30A	30A-600V	H, J, K, R	8.38	7.43	3.44	5.75	10.31
•	•	•	•	C361ND	60A	No Fuse	—	5.75	7.43	3.44	5.75	10.31
•	•	•	•	C361SD22	60A	60A-250V	H, K, R	8.38	7.43	3.44	5.75	10.31
•	•	•	•	C361SD22	60A	30A-600V	J	8.38	7.43	3.44	5.75	10.31
•	•	•	•	C361SD62	60A	60A-600V	H, K, R	8.38	7.43	3.44	5.75	10.31
•	•	•	•	C361SD62	60A	60A-600V	J	8.38	7.43	3.44	5.75	10.31
1	•	•	•	C361NE	100A	No Fuse	—	5.56	8.95	3.00	5.38	9.91
1	•	•	•	C361SE263	100A	100A-250V	H, K, R	10.31	8.95	3.00	5.38	9.91
1	•	•	•	C361SE263	100A	100A-600V	H, K, R	10.31	8.95	3.00	5.38	9.91
1	•	•	•	C361SE263	100A	100A-600V	J	10.31	8.95	3.00	5.38	9.91
		2	2	C361NF	200A	No Fuse	—	13.06	10.00	—	—	7.94
		2	2	C361SF264	200A	200A-250V	H, K, R	13.06	10.00	—	—	7.94
		2	2	C361SF264	200A	200A-600V	H, J, K, R	13.06	10.00	—	—	7.94

¹Wire bend space "P" does not allow the use of maximum cable size in 8" deep enclosures.
²200A switch should be installed in enclosures with an "A" dimension of 30" or greater.

Wallmount Enclosures

Cutler Hammer C371 Circuit Breaker Operators (C-H Westinghouse Circuit Breakers)

Fits Enclosure Depth				Cutler Hammer Mechanism	Amp Rating	Frame Type	Space Occupied		When K=4.75	When K=7.09	When K=11.62
8	10	12	16				L	M	P	P	P
•	•	•	•	C371E	205A	F Frame EHD,FDB,FD,HFD,FDC	6.00	5.50	4.44	6.81	11.44
•	•	•	•	C371E	150A	F Frame HMCP	6.00	5.50	4.44	6.81	11.44
	•	•	•	C371F	250A	J Frame JDB,JD,HJD,JDC	8.94	8.00	—	6.75	11.25
	•	•	•	C371F	250A	J Frame HMCP	10.94	8.00	—	6.75	11.25
	•	•	•	C371F	400A	K Frame DK,KDB,KD,HKD	9.75	8.00	—	—	10.75
	•	•	•	C371F	400A	K Frame HMCP	9.75	8.00	—	—	10.75
	•	•	•	C371G	600A	L Frame LD,HLD,LDC	8.44	11.88	—	—	9.18
	•	•	•	C371G	600A	L Frame HMCP	8.44	11.88	—	—	9.18

Charts reference Space Occupied by Disconnect Drawing.

1447S Single Door Disconnect Enclosures - NEMA 12, 13

ABB Controls, Allen Bradley, Cutler Hammer, General Electric, Siemens I-T-E Max-Flex™, Square D

Disconnect

Walmount Enclosures

Cutler Hammer

Cutler Hammer Flex-Shaft™ Operator Mechanisms (C-H Westinghouse Circuit Breakers)

Fits Enclosure Depth				Complete Operator Mechanisms	Amp Rating	Frame Type	Breaker Height "X" (in inches)	Breaker Width "Y" (in inches)
8	10	12	16					
•	•	•	•	F1S03	150A	F Frame EHD, FDB, FD, HFD, FDC	6.00	4.12
•	•	•	•	F1S03	150A	F Frame HMCP	6.00	4.12
•	•	•	•	F2S03	250A	J Frame JDB, JD, HJD, JDC	10.00	4.12
•	•	•	•	F2S03	250A	J Frame HMCP	10.00	4.12
•	•	•	•	F3S03	400A	K Frame DK, KDB, KD, HKD	10.12	5.50
•	•	•	•	F3S03	400A	K Frame HMCP	12.45	5.50
•	•	•	•	F4S04	600A	L Frame LD, HLD, LDC	10.75	8.25
•	•	•	•	F7S04	800A	M Frame MD, MDS	16.00	8.25
•	•	•	•	F5S04	1200A	N Frame ND, HND, NDC	16.00	8.25
•	•	•	•	F6S04	2500A	R Frame RD, CRD, RDC	16.00	15.50

Part numbers for Complete Operator Mechanisms include flange mounted handle, flexible shaft and circuit breaker mechanism. The last digit of the part number denotes the shaft length (F1S03=3' length).

- F,J,K frame Flex-Shafts™ available in 3' to 10' lengths.
- L,N,R frame Flex-Shafts™ available in 4' to 6' lengths.

Space Occupied By Disconnect

1. Flex-Shaft™ System permits circuit breaker locations separate from flange mounted handle mechanism.
2. See National Electrical Code 2005 article 430-10(b) for wiring space (Ref "P") needed for line side conductors.
3. Select shaft length based on location of circuit breaker in the enclosure. Maintain a 4" minimum bending radius for the Flex-Shaft™.
4. Space occupied by circuit breaker is calculated by:
 - Overall (Height "X" and Width "Y")
 - Minimum wire bend space (manufacturer specified)
 - Location "M" from right to left.

Charts reference Space Occupied by Disconnect Drawing.

1447S Single Door Disconnect Enclosures - NEMA 12, 13

ABB Controls, Allen Bradley, Cutler Hammer, General Electric, Siemens I-T-E Max-Flex™, Square D

Disconnect

General Electric

General Electric Type STDA Disconnect Switches

Fits Enclosure Depth				General Electric Mechanisms For Switches	Amp Rating	Fuse Clip	Fuse Class	Space Occupied		When K=4.75	When K=7.09	When K=11.62
8	10	12	16					L	M	P	P	P
1	•	•	•	TDOM1A	30A	No Fuse	—	7.75 ²	5.25	6.18	7.62	12.12
1	•	•	•	TDOM1A	30A	30A-250V	H, R	7.75 ²	5.25	6.18	7.62	12.12
1	•	•	•	TDOM1B	30A	30A-600V	H, R	12.38 ²	5.25	6.18	7.62	12.12
1	•	•	•	TDOM1B	30A	60A-250V	H, R	12.38 ²	5.25	6.18	7.62	12.12
1	•	•	•	TDOM1B	30A	60A-600V	H, R	12.38 ²	5.25	6.18	7.62	12.12
1	•	•	•	TDOM1A	60A	No Fuse	—	7.75 ²	5.25	6.18	7.62	12.12
1	•	•	•	TDOM1B	60A	60A-250V	H, R	12.38 ²	5.25	6.18	7.62	12.12
1	•	•	•	TDOM1B	60A	60A-600V	H, R	12.38 ²	5.25	6.18	7.62	12.12
1	•	•	•	TDOM1B	60A	100A-250V	H, R	12.38 ²	5.25	6.18	7.62	12.12
1	•	•	•	TDOM1B	60A	100A-600V	H, R	12.38 ²	5.25	6.18	7.62	12.12
1	•	•	•	TDOM1A	100A	No Fuse	—	7.75 ²	5.25	6.18	7.62	12.12
1	•	•	•	TDOM1B	100A	100A-250V	H, R	12.38 ²	5.25	6.18	7.62	12.12
1	•	•	•	TDOM1B	100A	100A-600V	H, R	12.38 ²	5.25	6.18	7.62	12.12
1	•	•	•	TDOM1B	100A	200A-250V	H, R	12.38 ²	5.25	6.18	7.62	12.12
1	•	•	•	TDOM1B	100A	200A-600V	H, R	12.38 ²	5.25	6.18	7.62	12.12
		•	•	TDOM2	200A	No Fuse	—	7.00	9.12	—	—	9.50
		•	•	TDOM2	200A	200A-250V	H, R	15.38	9.12	—	—	9.50
		•	•	TDOM2	200A	200A-600V	H, R	15.38	9.12	—	—	9.50

¹Disconnect moved down 0.875" to fit on panel.

²Applies to 8" deep enclosures and is 0.875 less in 10", 12" and 16" deep enclosures.

Walmart Enclosures

General Electric Type STDA Circuit Breaker Operators

Fits Enclosure Depth				Cutler Hammer Mechanism	Amp Rating	Frame Type	Space Occupied		When K=4.75	When K=7.09	When K=11.62
8	10	12	16				L	M	P	P	P
1	•	•	•	SDOM1A	150A	TEB, TED, THED	7.75 ²	5.25	6.06	7.50	12.06
1	•	•	•	SDOM1A	150A	TEC	7.75 ²	5.25	6.06	7.50	12.06
1	•	•	•	TDOM1B	150A	TB1	12.38 ²	5.25	6.06	7.50	12.06
1	•	•	•	TDOM1B	150A	TEC, TECL	12.38 ²	5.25	6.06	7.50	12.06
1	•	•	•	TDOM1C	150A	TEL	7.75 ²	5.25	6.06	7.50	12.06
		•	•	TDOM1D	150A	THLC1	7.75	5.25	—	5.12	9.62
		•	•	TDOM3	225A	TFJ	10.38	5.75	—	6.06	10.62
		•	•	TDOM3	225A	TFK, THFK, TFL	10.38	5.75	—	6.06	10.62
		•	•	TDOM4	400A	TJJ, TJK4, THJK4, TJL4V	8.25	9.38	—	5.12	9.69
		•	•	TDOM4	600A	TJK6, THJK6, TJ4V, TJL4V	8.25	9.38	—	5.12	9.69
		•	•	TDOM5	400A	TB4, TJH6S	14.25	9.38	—	5.12	9.69
		•	•	TDOM6	225A	TLB2, THLC2	11.75	9.38	—	—	9.12
		•	•	TDOM6	400A	TLB4, THLC4	11.75	9.38	—	—	7.75
1	•	•	•	SDOM1A	150A	SPECTRA SE150	7.75 ²	5.25	6.06	7.50	12.06
		•	•	SDOM3	250A	SPECTRA SF250	10.38	5.75	—	6.06	10.62
		•	•	SDOM4	600A	SPECTRA SG600	10.00	7.00	—	—	7.93

¹Disconnect moved down 0.875" to fit on panel.

²Applies to 8" deep enclosures only. For 10", 12" and 16" deep enclosures, 0.875 less.

Charts reference Space Occupied by Disconnect Drawing.

1447S Single Door Disconnect Enclosures - NEMA 12, 13

ABB Controls, Allen Bradley, Cutler Hammer, General Electric, Siemens I-T-E Max-Flex™, Square D

Disconnect

Walmount Enclosures

General Electric

General Electric Circuit Breakers (Spectra-Flex™ Cable Operators)

Fits Enclosure Depth			Frame Size	Max Amp Rating	Circuit Breaker Height "X"	Circuit Breaker Width "Y"
C=8	C=10	C=12 or 16				
•	•	•	E150	150A	6.31	4.12
•	•	•	SE150	150A	6.31	4.12
	•	•	SF250	250A	10.12	4.12
		•	SG600	600A	10.09	5.50
		•	SK1200	1200A	15.50	8.25

Frame Size	Breaker Mechanism	Flange Mounting Handle	Operating Cable
E150	SCOM1A	SCH1	SC3L ¹
SE150/SF250	SCOM1EF	SCH1	SC3L ¹
SG600	SCOM1G	SCH1	SC3L ¹
SK1200	SCOM1K	SCH2K	SC3H ¹

¹Operating Cables are available 3' to 10' lengths. In the table above, the number "3" in the part number indicates a 3' cable.

1. GE Spectra-Flex™ Operating Cables permit circuit breaker locations separate from flange mounted handle mechanism.
2. See National Electrical Code 2005 article 430-10(b) for wiring space (Ref "P") needed for line side conductors.
3. Select shaft length based on location of circuit breaker in the enclosure. Maintain a 3" minimum bending radius for the Flex-Shaft™.
4. Space occupied by circuit breaker is calculated by:
 - Overall (Height "X" and Width "Y")
 - Minimum wire bend space (manufacturer specified)
 - Location "M" from right to left.

Charts reference Space Occupied by Disconnect Drawing.

1447S Single Door Disconnect Enclosures - NEMA 12, 13

ABB Controls, Allen Bradley, Cutler Hammer, General Electric, Siemens I-T-E Max-Flex™, Square D

Disconnect

Siemens I-T-E

I-T-E - Disconnect Switches (Max-Flex™ Operators)

C=8"	Fits Enclosure Depth		Switches	Amp Rating	Fuse Clip	Fuse Class	Disconnect Height "X"	Disconnect Width "Y"
	C=10"	C=12" or 16"						
•	•	•	MCS603R	30A	No Fuse	—	5.52	6.13
•	•	•	MCS603R	30A	30A-250V	H,K,R	8.11	6.13
•	•	•	MCS603R	30A	30A-600V	H,K,R	10.11	6.13
•	•	•	MCS603R	30A	30A-600V	J	8.48	6.13
•	•	•	MCS606R	60A	No Fuse	—	5.52	6.13
•	•	•	MCS606R	60A	60A-250V	H,K,R	7.86	6.13
•	•	•	MCS606R	60A	60A-600V	H,K,R	10.38	6.13
•	•	•	MCS606R	60A	60A-600V	J	8.36	6.13
•	•	•	MCS610R	100A	No Fuse	—	7.59	7.38
•	•	•	MCS610R	100A	100A-250V	H,K,R	11.85	7.38
•	•	•	MCS610R	100A	100A-600V	H,K,R	13.85	7.38
•	•	•	MCS610R	100A	100A-600V	J	10.60	7.38
•	•	•	MCS620R	200A	No Fuse	—	9.00	9.17
•	•	•	MCS620R	200A	200A-250V	H,K,R	14.70	9.17
•	•	•	MCS620R	200A	200A-600V	H,K,R	17.20	9.17
•	•	•	MCS620R	200A	200A-600V	J	13.32	9.17

Wallmount Enclosures

Siemens I-T-E Max-Flex™ Operators (Circuit Breakers)

Complete Operator Mechanism	Amp Rating	Breaker Frame Size	Circuit Breaker Height "X"	Circuit Breaker Width "Y"	Circuit Breaker Type
FHOE036	125A	ED	6.34	3.00	ED2, ED4, ED6, HED4, HED6
FHOE036	125A	CED	9.58	3.00	CED6
FHOF036	250A	FD	9.50	4.50	FXD6-A, FD6-A, HFD6, FXD6-ETJ, HHFD6, HHFXD6
FHOF036	250A	CFD	14.25	4.50	CFD6, CFD6-ETI
FHOJ036	400A, 600A	JD, LD	11.00	7.50	JXD2, LXD6, JXD6, JD6, LD6, HJD6, HLD6, HHJD6, HHL6, HHJXD6, HHLXD6, JXD6-ETI, LXD6-ETI
FHOJ036	400A, 600A	CJD, CLD	17.86	7.50	CJD6, CLD6, CJD6-ETI, CLD6-ETI
FHOLM036	800A	LMD	16.00	9.00	LMD6, LMXD6, HLMD6, HLMXD6, LMXD6-ET1
FHONO48	800A	MD	24.00	9.00	MD6, MXD6, HMD6, HMXD6, CMD6, MXD6-ETI, CMD6-ETI
FHONO48	1200A	ND	24.00	9.00	ND6, NXD6, HND6, HNXD6, CND6

Last three digits of operator mechanism part number denote cable length in inches.

- 48" cables are offered for ED,FD,JD/LD operators

Space Occupied By Disconnect

1. I-T-E Max-Flex™ System permits circuit breaker locations separate from flange mounted handle mechanism.
2. See National Electrical Code 2005 article 430-10(b) for wiring space (Ref "P") needed for line side conductors.
3. See Siemens I-T-E instructions for disconnect location limitations when using 36" or 48" Max-Flex™ cables.
4. Space occupied by circuit breaker is calculated by:
 - Overall (Height "X" and Width "Y")
 - Minimum wire bend space (manufacturer specified)
 - Location "M" from right to left.

Charts reference Space Occupied by Disconnect Drawing.

1447S Single Door Disconnect Enclosures - NEMA 12, 13

ABB Controls, Allen Bradley, Cutler Hammer, General Electric, Siemens I-T-E Max-Flex™, Square D

Disconnect

Walmart Enclosures

Square D

Square D Class 9422 Disconnect Switches

Fits Enclosure Depth				Square D Type Number	Amp Rating	Fuse Clip	Fuse Class	Space Occupied		When K=4.75	When K=7.09	When K=11.62
8	10	12	16					L	M	P	P	P
•	•	•	•	TCN-30	30A	No Fuse	—	3.80	6.84	3.69	6.03	10.56
•	•	•	•	TCF-30	30A	30A-250V	H, K, R	5.53	6.84	3.69	6.03	10.56
•	•	•	•	TCF-33	30A	30A-600V	H, K, R	8.15	6.84	3.69	6.03	10.56
•	•	•	•	TCF-33	30A	60A-250V	H, K, R	6.15	6.84	3.69	6.03	10.56
•	•	•	•	TCF-33	30A	30A-600V	J	5.53	6.84	3.69	6.03	10.56
•	•	•	•	TDN-60	60A	No Fuse	—	3.80	6.84	3.69	6.03	10.56
•	•	•	•	TDF-60	60A	30A-600V	H, K, R	8.15	6.84	3.69	6.03	10.56
•	•	•	•	TDF-60	60A	60A-250V	H, K, R	6.15	6.84	3.69	6.03	10.56
•	•	•	•	TDF-63	60A	60A-600V	H, K, R	8.65	6.84	3.69	6.03	10.56
•	•	•	•	TDF-63	60A	60A-600V	J	5.53	6.84	3.69	6.03	10.56
•	•	•	•	TEN-10	100A	No Fuse	—	3.80	6.84	—	5.91	10.44
•	•	•	•	TEF-10	100A	100A-250V	H, K, R	8.25	6.84	—	5.91	10.44
•	•	•	•	TEF-10	100A	100A-600V	H, K, R	10.25	6.84	—	5.91	10.44
•	•	•	•	TEF-10	100A	100A-600V	J	7.05	6.84	—	5.91	10.44
•	•	•	•	TC-1	30A	No Fuse	—	5.75	6.00	3.12	5.12	9.62
•	•	•	•	TC-2	30A	30A-250V	H, K, R	5.75	6.00	3.12	5.12	9.62
•	•	•	•	TC-3	30A	30A-600V	H, K, R	7.75	6.00	3.12	5.12	9.62
•	•	•	•	TC-3	30A	60A-250V	H, K, R	5.88	6.00	3.12	5.12	9.62
•	•	•	•	TC-3	30A	30A-600V	J	5.75	6.00	3.12	5.12	9.62
•	•	•	•	TD-1	60A	No Fuse	—	6.38	6.62	3.62	6.00	10.50
•	•	•	•	TD-2	60A	30A-600V	H, K, R	8.50	6.62	3.62	6.00	10.50
•	•	•	•	TD-2	60A	60A-250V	H, K, R	6.50	6.62	3.62	6.00	10.50
•	•	•	•	TD-3	60A	60A-600V	H, K, R	9.00	6.62	3.62	6.00	10.50
•	•	•	•	TD-3	60A	60A-600V	J	6.38	6.62	3.62	6.00	10.50
•	•	•	•	TE-1	100A	No Fuse	—	4.75	8.38	—	5.75	10.25
•	•	•	•	TE-2	100A	100A-250V	H, K, R	7.50	8.38	—	5.75	10.25
•	•	•	•	TE-2	100A	100A-600V	H, K, R	9.50	8.38	—	5.75	10.25
•	•	•	•	TE-2	100A	100A-600V	J	6.25	8.38	—	5.75	10.25
•	•	•	•	TE-3	100A	200A-600V	J	13.75	8.38	—	5.75	10.25
•	•	•	•	TF-1	200A	No Fuse	—	5.50	11.62	—	—	8.88
•	•	•	•	TF-2	200A	200A-250V	H, K, R	11.50	11.62	—	—	8.88
•	•	•	•	TF-2	200A	200A-600V	H, K, R	14.00	11.62	—	—	8.88
•	•	•	•	TF-2	200A	200A-600V	J	10.12	11.62	—	—	8.88
•	•	•	•	TF-3	200A	400A-600V	J	14.50	11.62	—	—	8.88

Square D Class 9422 Variable Depth Operators (Circuit Breakers)

Fits Enclosure Depth				Square D Type Number	Amp Rating	Frame Type	Space Occupied		When K=4.75	When K=7.09	When K=11.62
8	10	12	16				L	M	P	P	P
•	•	•	•	RG-1	75A	GJL	3.53	3.74	3.59	5.93	10.47
•	•	•	•	RG-1	100A	GJL	3.53	3.74	3.59	5.93	10.47
•	•	•	•	RN-1	100A	FAL, FHL	5.12	5.25	3.75	6.12	10.62
•	•	•	•	RP-1	250A	KAL, KHL	7.12	5.62	4.25 ¹	6.88	11.38
•	•	•	•	RR-1	400A	LAL, LHL, Q4L	7.62	8.75	—	—	7.00

¹ Not recommended except with #1 or smaller line conductors.

Charts reference Space Occupied by Disconnect Drawing.

1447S Single Door Disconnect Enclosures - NEMA 12, 13

ABB Controls, Allen Bradley, Cutler Hammer, General Electric, Siemens I-T-E Max-Flex™, Square D

Disconnect

Square D

Square D Class 9422 Disconnect Switches (Cable Mechanism 9422-CFT30 and 9422A-1 Handle Mechanism)

C=8"	Fits Enclosure Depth		Square D Type Number	Amp Rating	Fuse Clip	Fuse Class	Disconnect Height "X"	Disconnect Width "Y"
	C=10"	C=12" or 16"						
•	•	•	TCN-30	30A	No Fuse	—	5.90	6.20
•	•	•	TCF-30	30A	30A-250V	H, K, R	7.50	6.20
•	•	•	TCF-33	30A	30A-600V	H, K, R	10.15	6.20
•	•	•	TCF-33	30A	60A-250V	H, K, R	8.15	6.20
•	•	•	TCF-33	30A	30A-600V	J	7.50	6.20
•	•	•	TDN-60	60A	No Fuse	—	5.90	6.20
•	•	•	TDF-60	60A	30A-600V	H, K, R	10.15	6.20
•	•	•	TDF-60	60A	60A-250V	H, K, R	8.15	6.20
•	•	•	TDF-63	60A	60A-600V	H, K, R	10.65	6.20
•	•	•	TDF-63	60A	60A-600V	J	7.5	6.20
	•	•	TEN-10	100A	No Fuse	—	5.90	6.20
	•	•	TEF-10	100A	100A-250V	H, K, R	10.35	6.20
	•	•	TEF-10	100A	100A-600V	H, K, R	12.35	6.20
	•	•	TEF-10	100A	100A-600V	J	10.35	6.20

Walmart Enclosures

Square D Class 9422 Cable Mechanism (Circuit Breakers)

C=8"	Fits Enclosure Depth		Cable Type Switch	Amp Rating	Frame Type	Circuit Breaker Height "X"	Circuit Breaker Width "Y"
	C=10"	C=12" or 16"					
•	•	•	9422 CGJ30	75A	GJL	4.75	3.50
•	•	•	9422 CEJ30	100A	GJL	4.75	3.50
•	•	•	9422 CFA30	100A	FAL, FHL	6.00	4.50
•	•	•	9422 CKA30	250A	KAL, KHL	8.00	4.50
		•	9422 CLA30	400A	LAL, LHL, Q4L	11.00	6.00

Use cable mechanism with circuit breaker and 9422-A1 handle mechanism

Cable operators are offered in 3', 5', and 10' lengths. Last 2 digits of part numbers above (30) are for 3' cables

Space Occupied By Disconnect Switch

1. Square D Cable System permits circuit breaker locations separate from flange mounted handle mechanism.
2. See National Electrical Code 2005 article 430-10(b) for wiring space (Ref "P") needed for line side conductors.
3. Select cable mechanism length based on disconnect location in enclosure. See Square D instructions for minimum cable bend radius.
4. Space occupied by circuit breaker is calculated by:
 - Overall (Height "X" and Width "Y")
 - Minimum wire bend space (manufacturer specified)

Charts reference Space Occupied by Disconnect Drawing.