

# Customer Information Sheet

DRAWING No.: M80-520XXX

SHEET 2 OF 2

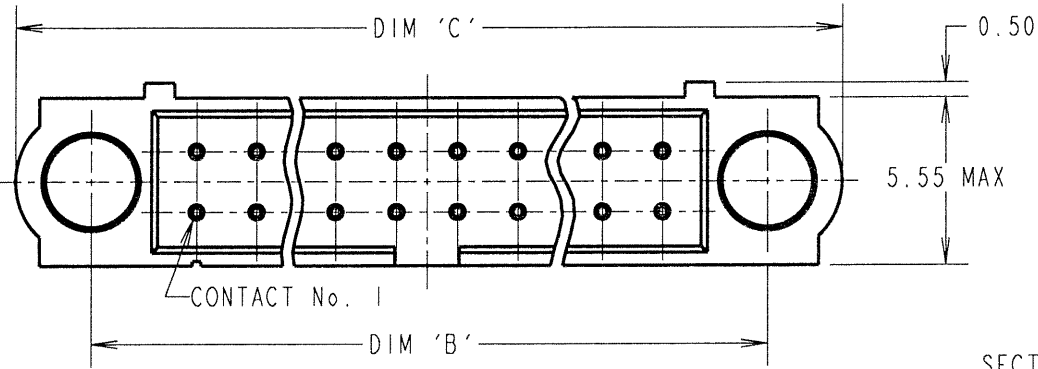
IF IN DOUBT - ASK

(C)

NOT TO SCALE

THIRD ANGLE PROJECTION

ALL DIMENSIONS IN mm



ORDER CODE:  
**M80-520XXX**

No. OF CONTACTS  
06, 10, 12, 14, 20,  
26, 34, 42, 50

FINISH  
22 - SELECTIVE GOLD + TIN/LEAD  
42 - SELECTIVE GOLD + 100% TIN

SPECIFICATIONS:

MATERIAL:  
MOULDING = GLASS-FILLED PPS,  
UL94V-0, BLACK  
CONTACT = PHOSPHOR BRONZE

FINISH:  
22 CONTACT = 0.75µ GOLD ON CONTACT AREA,  
3µ 90/10 TIN/LEAD ON TAILS  
42 CONTACT = 0.75µ GOLD ON CONTACT AREA,  
3µ 100% TIN ON TAILS

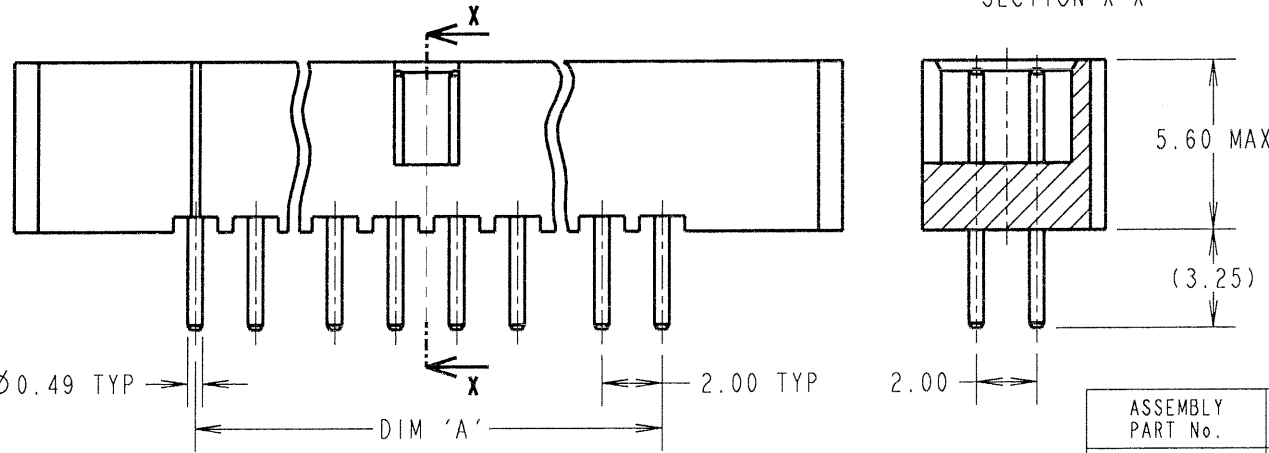
ELECTRICAL:  
CURRENT RATING AT 25°C = 3.0A MAX  
CURRENT RATING AT 85°C = 2.2A MAX  
WORKING VOLTAGE = 120V AC/DC  
VOLTAGE PROOF = 360V AC/DC  
CONTACT RESISTANCE = 25 mΩ MAX  
INSULATION RESISTANCE = 100 MΩ MIN

MECHANICAL:  
DURABILITY = 500 OPERATIONS

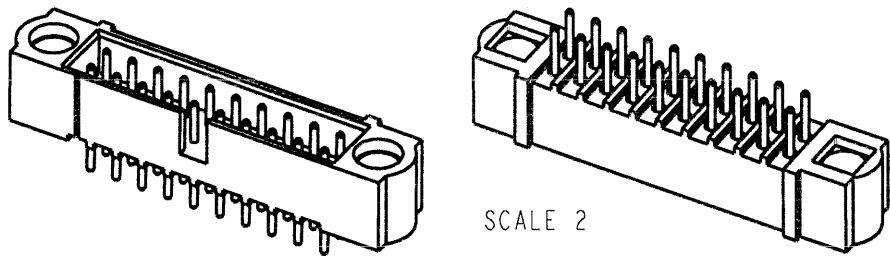
ENVIRONMENTAL:  
TEMPERATURE RANGE = -55°C TO +125°C

PACKING:  
TUBE

FOR COMPLETE SPECIFICATION, SEE  
COMPONENT SPECIFICATION C005XX  
(LATEST ISSUE)



NOTES:  
1. RECOMMENDED PCB HOLE  
SIZE = Ø0.65mm MIN.



| ASSEMBLY PART No. | No. OF CONTACTS | DIM 'A' | DIM 'B' | DIM 'C' |
|-------------------|-----------------|---------|---------|---------|
| M80-52006XX       | 6               | 4.00    | 11.00   | 16.00   |
| M80-52010XX       | 10              | 8.00    | 15.00   | 20.00   |
| M80-52012XX       | 12              | 10.00   | 17.00   | 22.00   |
| M80-52014XX       | 14              | 12.00   | 19.00   | 24.00   |
| M80-52020XX       | 20              | 18.00   | 25.00   | 30.00   |
| M80-52026XX       | 26              | 24.00   | 31.00   | 36.00   |
| M80-52034XX       | 34              | 32.00   | 39.00   | 44.00   |
| M80-52042XX       | 42              | 40.00   | 47.00   | 52.00   |
| M80-52050XX       | 50              | 48.00   | 55.00   | 60.00   |

|                             |      |              |        |
|-----------------------------|------|--------------|--------|
| JMB                         | C    | 20.12.06     | 9625   |
| NAME                        | ISS. | DATE         | C/NOTE |
| APPROVED: <i>LB</i>         |      |              |        |
| CHECKED: <i>[Signature]</i> |      |              |        |
| DRAWN:                      |      | W. J. BOURNE |        |
| CUSTOMER REF.:              |      |              |        |
| ASSEMBLY DRG:               |      |              |        |

**HARWIN**

|  |  |   |
|--|--|---|
| HARWIN INC<br>U.S.A.<br>TEL: (812) 542 2540<br>FAX: (812) 542 2541 | HARWIN PLC<br>U.K.<br>TEL: 023 9231 4545<br>FAX: 023 9231 4590 | HARWIN PTE<br>SINGAPORE<br>TEL: 65 6779 4909<br>FAX: 65 6779 3868 |
|--|--|---|

THIS DRAWING AND ANY INFORMATION OR DESCRIPTIVE MATTER SET OUT HEREON ARE CONFIDENTIAL AND COPYRIGHT PROPERTY OF THE HARWIN GROUP AND MUST NOT BE DISCLOSED, LOANED, COPIED OR USED FOR MANUFACTURING, TENDERING OR FOR ANY OTHER PURPOSE WITHOUT THEIR WRITTEN PERMISSION.

TOLERANCES  
X. = ±1mm  
X.X = ±0.25mm  
X.XX = ±0.10mm  
X.XXX = ±0.01mm  
ANGLES = ±5°  
UNLESS STATED

MATERIAL:  
SEE ABOVE

FINISH: SEE ABOVE

S/AREA: mm<sup>2</sup>

TITLE: JACKSCREW DATAMATE  
DIL VERTICAL PC TAIL  
MALE ASSEMBLY (NO J/S)

DRAWING NUMBER:  
**M80-520XXX**

SHT 2 OF 2