

# Customer Information Sheet

DRAWING No.: M80-879XXXX

SHEET 2 OF 2

IF IN DOUBT - ASK

(C)

NOT TO SCALE

THIRD ANGLE PROJECTION

ALL DIMENSIONS IN mm

COMMERCIAL  
ORDER CODE:  
**M80-879XXXX**

TOTAL No. OF WAYS  
02 - 07, 17, 22

FINISH  
05 - GOLD  
22 - SELECTIVE GOLD

BRITISH STANDARD  
ORDER CODE: TO BS9525 F0033

**B5743-1XX-M-T-X**

TOTAL No. OF WAYS  
02 - 07, 17, 22

FINISH  
0 - SELECTIVE GOLD  
2 - GOLD

**NOTES.**

- 2-OFF STRAIN RELIEF STRAP M80-003006 CAN BE ORDERED SEPARATELY IF REQUIRED.
- FOR RoHS COMPLIANT PRODUCT USE M80-852XXXX

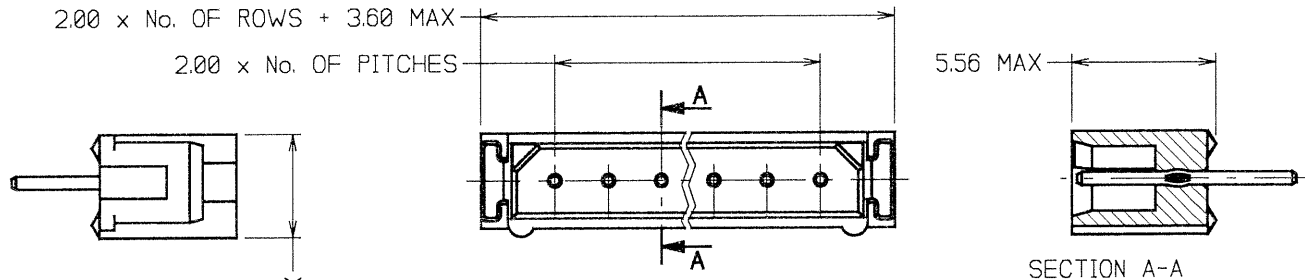
**SPECIFICATIONS:**

**MATERIAL:**  
MOULDING - GLASS-FILLED POLYESTER UL94V-0  
CONTACT - PHOSPHOR BRONZE  
LATCH - BERYLLIUM COPPER  
**FINISH:**  
CONTACTS:  
05 = 0.75µ GOLD  
22 = 0.75µ GOLD ON CONTACT AREA, 3.0µ 90/10 TIN/LEAD ON TAILS  
LATCH - 1.25µ NICKEL  
**MECHANICAL:**  
DURABILITY = 500 OPERATIONS  
**PACKING:**  
TUBE

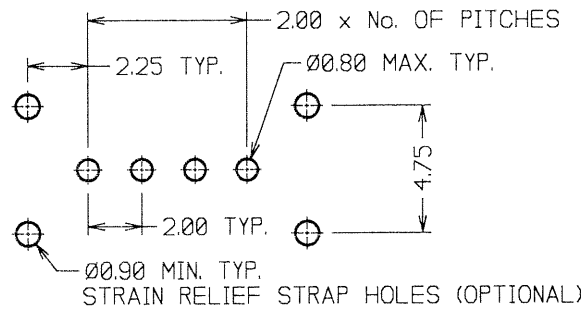
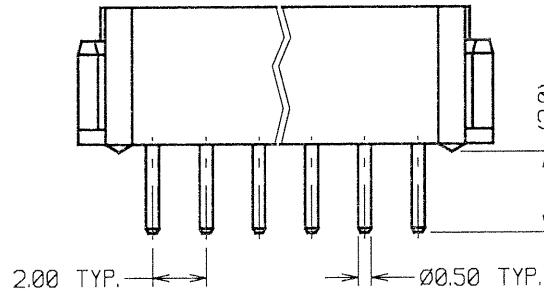
**ELECTRICAL:**

CURRENT RATING AT 25°C = 30A MAX  
CURRENT RATING AT 85°C = 2.2A MAX  
WORKING VOLTAGE = 120V AC/DC  
VOLTAGE PROOF = 360V AC/DC  
CONTACT RESISTANCE (INITIAL) = 20 MILLIOHMS MAX  
CONTACT RESISTANCE (AFTER CONDITIONING) = 25 MILLIOHMS MAX  
INSULATION RESISTANCE (INITIAL) = 1000 MEGOHMS MIN  
INSULATION RESISTANCE (AFTER CONDITIONING) = 100 MEGOHMS MIN  
**ENVIRONMENTAL:**  
TEMPERATURE RANGE = -55°C TO +125°C

FOR COMPLETE SPECIFICATION, SEE COMPONENT SPECIFICATION C005XX (LATEST ISSUE)



3.98 MAX



RECOMMENDED PCB LAYOUT

JMB	12	07.09.06	9419
NAME	ISS.	DATE	C/NOTE
APPROVED: <i>JB</i>			
CHECKED: <i>NJC</i>			
DRAWN: W. J. BOURNE			
CUSTOMER REF.:			
ASSEMBLY DRG:			

**HARWIN**

HARWIN USA TEL: 603 893 5376 FAX: 603 893 5396 mis@harwin.com	HARWIN Europe (UK) TEL: 023 9231 4545 FAX: 023 9231 4590 mis@harwin.co.uk	HARWIN Asia TEL: +65 6 779 4909 FAX: +65 6 779 3868 mis@harwin.com.sg
--	--	--

THIS DRAWING AND ANY INFORMATION OR DESCRIPTIVE MATTER SET OUT HEREON ARE CONFIDENTIAL AND COPYRIGHT PROPERTY OF THE HARWIN GROUP AND MUST NOT BE DISCLOSED, LOANED, COPIED OR USED FOR MANUFACTURING, TENDERING OR FOR ANY OTHER PURPOSE WITHOUT THEIR WRITTEN PERMISSION.

**TOLERANCES**  
X. = ±1mm  
X.X = ±0.25mm  
X.XX = ±0.10mm  
X.XXX = ±0.01mm  
ANGLES = ±5°  
UNLESS STATED

**MATERIAL:**  
SEE ABOVE  
**FINISH:** SEE ABOVE  
**S/AREA:** mm<sup>2</sup>

**TITLE:** DATAMATE 2mm PITCH VERTICAL MALE PC TAIL SIL ASSEMBLY - UNLATCHED  
**DRAWING NUMBER:**  
**M80-879XXXX**  
SHT 2 OF 2