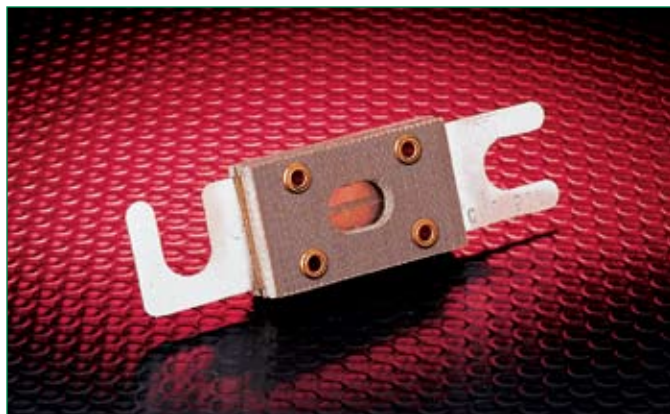
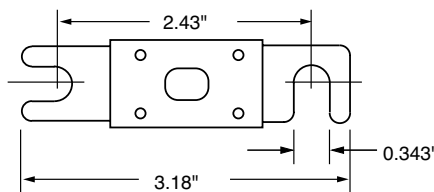


Fork-Lift and Stud-Mounted Fuses

32 – 130 Volts DC • Fast Acting and Time-Delay



CNL fast-acting and CNN very fast acting fuses are recommended for use on battery operated lift trucks and other low voltage battery operated equipment.



CNL/CNN Limiter Fuses

Specifications

Voltage Ratings: CNL: 32 Volts DC
CNN: 48 Volts DC, 75 Volts AC
Interrupting Rating: 2,500 amperes
Ampere Range: 10 – 800 amperes
Maximum Torque: 90 Inch lbs.

Recommended Fuse Block

LFFB001

Ampere ratings

| CNL | 35 | 80 | 150 | 250 | 350 |
|-----|----|-----|-----|-----|-----|
| | 40 | 100 | 175 | 275 | 400 |
| | 50 | 125 | 200 | 300 | 500 |
| | 60 | 130 | 225 | 325 | |
| CNN | 10 | 80 | 175 | 300 | 500 |
| | 35 | 90 | 200 | 325 | 600 |
| | 40 | 100 | 225 | 350 | 700 |
| | 50 | 125 | 250 | 400 | 800 |
| | 60 | 150 | 275 | | |

Example part number (series & amperage): CNN 700



CBO/CCK/CCL Lift-Truck Fuses

CBO fast acting, and CCK and CCL dual-element time-delay fuses are recommended for fork lift trucks and other similar battery operated equipment.

Specifications

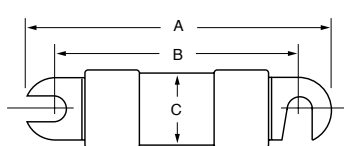
Voltage Ratings: CBO: 32 Volts DC
CCK: 130 Volts DC (1-100A)
72 Volts DC (120-200A)
48 Volts DC (225-300A)
CCL: 125 Volts DC
Interrupting Rating: CBO, CCK & CCL: 10,000A
Ampere Range: 1 – 300 amperes
For operating characteristics contact factory

Ampere ratings

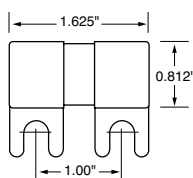
| CBO | 10 | 25 | 50 | 80 | |
|--------------------|----|----|-----|-----|-----|
| <i>Fast Acting</i> | 12 | 30 | 60 | 100 | |
| | 15 | 35 | 70 | 125 | |
| | 20 | 40 | 75 | 150 | |
| CCK | 1 | 25 | 60 | 120 | 200 |
| <i>Time-Delay</i> | 2 | 30 | 70 | 140 | 225 |
| | 10 | 35 | 75 | 150 | 250 |
| | 15 | 40 | 80 | 160 | 300 |
| | 20 | 50 | 100 | 175 | |
| CCL | 30 | 40 | 60 | 100 | |
| <i>Time-Delay</i> | 35 | 50 | 80 | 120 | |

Example part number (series & amperage): CCK 150

| Part No. | A | B | C |
|--------------|-------|-------|-------|
| CCK 1-15A | 2.810 | 2.204 | 0.510 |
| CCK 20-30A | 3.060 | 2.454 | 0.510 |
| CCK 35-60A | 3.629 | | 0.750 |
| CCK 70-120A | 4.129 | 3.454 | 1.00 |
| CCK 140-200A | 4.362 | 3.579 | 1.00 |
| CCK 225-300A | 4.612 | 3.829 | 1.00 |
| CCL 30-60A | 3.060 | 2.454 | 0.51 |
| CCL 80-120A | 3.38 | 2.70 | 0.75 |



CCK/CCL



CBO