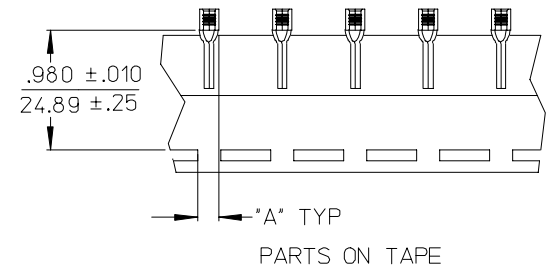
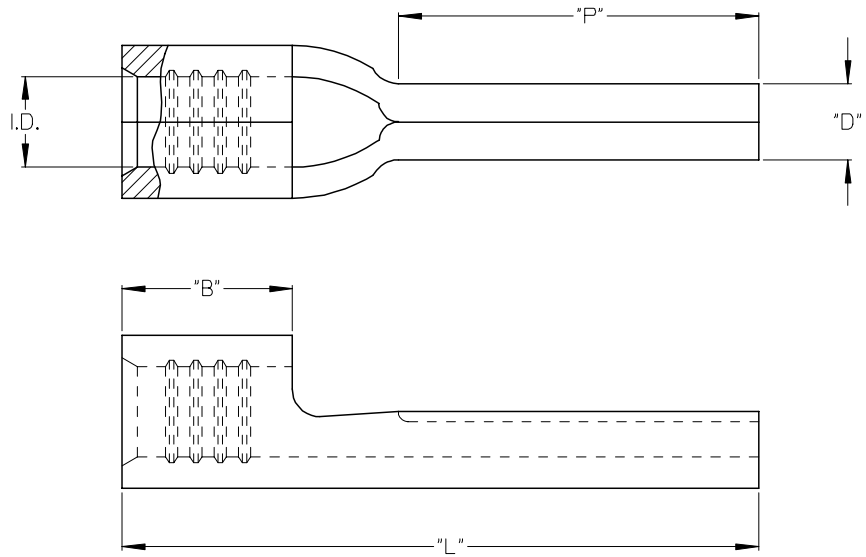


10	9	8	7	6	5	4	3	2	1	
MATERIAL NO. LOOSE PIECE	ENGINEERING NO. LOOSE PIECE	MATERIAL NO. TAPE MOUNTED	ENGINEERING NO. TAPE MOUNTED	AWG	"I.D."±.003	"B"±.01	"L"±.02	"P"±.01	"D"±.010	"A"±.010
192110003	WP-1218	192110004	WP-1218 T	22-18	.061/ 1.55	.183/ 4.65	.665/ 16.89	.39/ 9.9	.078/ 1.98	.160/ 4.06
192110005	WP-1614	192110006	WP-1614 T	16-14	.089/ 2.26	.183/ 4.65	.665/ 16.89	.39/ 9.65	.078/ 1.98	.175/ 4.45
192110001	WP-1210	192110002	WP-1210 T	12-10	.136/ 3.45	.246/ 6.25	.785/ 19.93	.45/ 11.43	.120/ 3.048	.205/ 5.21



PARTS ON TAPE

SALES DRAWING

- NOTES:
1. MATERIAL: COPPER
 2. FINISH: ELECTRO-TIN PLATING THICKNESS .000030 MINIMUM

REVISED & REDRAWN EC NO: 2005/07/20 TIDRWNL SHADECK CHKDRROSS 2005/07/21 APPR: JPAWLICK 2005/07/21	QUALITY SYMBOLS ▽=0 ▽=0	GENERAL TOLERANCES (UNLESS SPECIFIED)		DIMENSION STYLE IN/MM		SCALE ---	DESIGN UNITS INCH	THIRD ANGLE PROJECTION	
		4 PLACES ± --- ± ---	3 PLACES ± --- ± ---	DRAWN BY B.ENDERLE	DATE 02/14/02	TITLE KRIMPTITE WIRE PIN TERMINALS			
		2 PLACES ± --- ± ---	1 PLACE ± --- ± ---	CHECKED BY H.B.IETZEL	DATE 02/14/02	MATERIAL NO. RDEROSS 02/14/02			
		ANGULAR ± --- °		DRAFT WHERE APPLICABLE MUST REMAIN WITHIN DIMENSIONS		MATERIAL NO. SEE CHART		DOCUMENT NO. SD-19211-002	