

NOTES:
 1) MATERIAL:
 HOUSING & INSULATOR: NYLON(PA), GLASS FILLED, UL94V-0, COLOR: BLACK
 TERMINALS: PHOSPHOR BRONZE, .012/(0.30) THICK
 SHIELD: BRASS

2) FINISH:
 TERMINALS:
 A = SELECT GOLD IN CONTACT AREA: 50 MICRONS MIN.,
 *SELECT TIN IN PC TAIL AREA: 100 MICRONS MIN.,
 WITH OVERALL NICKEL UNDERPLATE: 50 MICRONS MIN.
 B = SELECT GOLD IN CONTACT AREA: 30 MICRONS MIN.,
 *SELECT TIN IN PC TAIL AREA: 100 MICRONS MIN.,
 WITH OVERALL NICKEL UNDERPLATE: 50 MICRONS MIN.
 C = SELECT GOLD IN CONTACT AREA: 15 MICRONS MIN.,
 *SELECT TIN IN PC TAIL AREA: 100 MICRONS MIN.,
 WITH OVERALL NICKEL UNDERPLATE: 50 MICRONS MIN.

SHIELD:
 *100 MICRONS NICKEL OVER 50 MICRONS COPPER UNDERPLATE
 PCB GROUND TABS DIPPED IN TIN
 *THE PRIMARY SHIPPING CARTON WILL BE LABELED "COMPLIANT TO RoHS
 DIRECTIVE 2002/95/EC AND ELV ANNEX II OF DIRECTIVE 2000/53/EC".
 CARTONS WITHOUT THIS LABEL MAY CONTAIN PRODUCT WITH TIN-LEAD
 IN THE PC TAILS AND/OR SHIELD.

3) PRODUCT SPECIFICATION AND PROCESSING PARAMETERS: PS-43743-0001.
 4) PACKAGING SPECIFICATION:
 CONNECTOR ASSEMBLIES TO BE PACKAGED USING TAPE & REEL SYSTEM
 PER PACKAGING DRAWING PK-70873-7006.

△ COPLANARITY SPECIFICATION:
 WHEN AN ASSEMBLY IS PLACED UPON A LEVEL SURFACE, THE MAXIMUM
 GAP BETWEEN THE LEVEL SURFACE AND ALL TERMINAL TAILS AND
 FRONT SOLDER TAB IS .006/(0.15).

△ THRU HOLES .094±.002/(2.39±0.05) ARE FOR SHIELDS WITH LOCATION TABS ONLY.

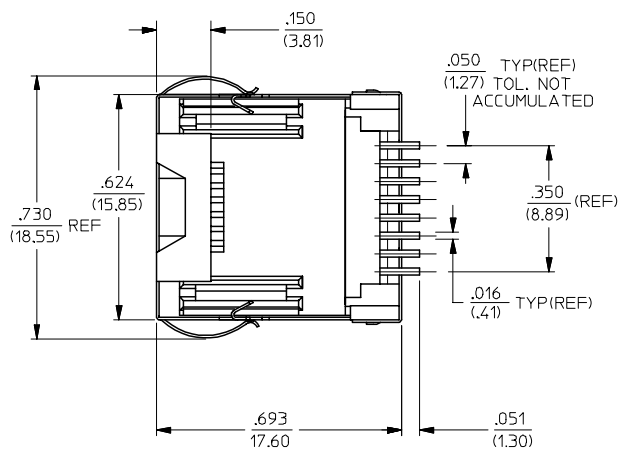
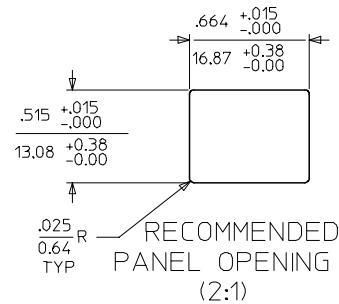
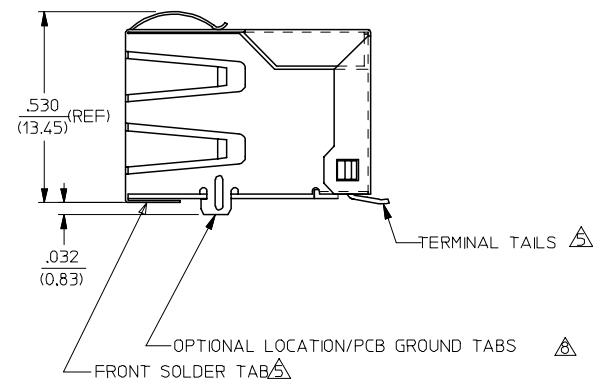
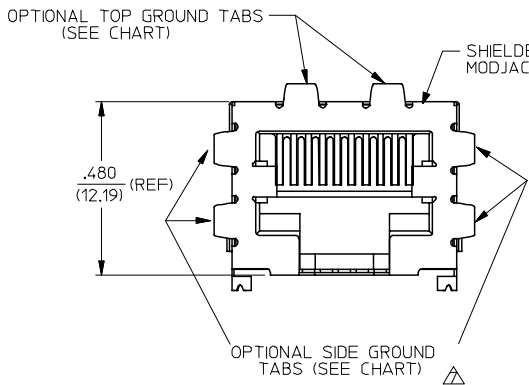
△ AVAILABLE WITH (4) OPTIONAL SIDE GROUND TABS (OMITTED FOR SIDE TO SIDE
 STACKABILITY).

△ AVAILABLE WITH (2) OPTIONAL LOCATION TABS FOR LOCATING COMPONENT
 TO PCB AND/OR GROUNDING TO PCB.

9) FOR ASSEMBLIES HAVING VOIDED CIRCUITS, THE TAIL PORTION IS CUT
 AND REMOVED. THE MATING PORTION OF THE TERMINAL REMAINS INTACT.

10) CONFORMS TO FCC REGULATION PART 68.5 FOR MODULAR JACKS.

11) THIS PART CONFORMS TO CLASS B REQUIREMENTS OF COSMETIC
 SPECIFICATION PS-45499-002.



44282-0001, 44282-0002
 & 44282-0003 SHOWN

44282-1004	A	NO	NO	YES	NONE
44282-0012	C	NO	YES	NO	NONE
44282-0011	B	NO	YES	NO	NONE
44282-0010	A	NO	YES	NO	NONE
44282-0009	C	YES	YES	NO	NONE
44282-0008	B	YES	YES	NO	NONE
44282-0007	A	YES	YES	NO	NONE
44282-0006	C	NO	YES	YES	NONE
44282-0005	B	NO	YES	YES	NONE
44282-0004	A	NO	YES	YES	NONE
44282-0003	C	YES	YES	YES	NONE
44282-0002	B	YES	YES	YES	NONE
44282-0001	A	YES	YES	YES	NONE

ASSEMBLY MAT. NO.	TERMINAL PLATING	SHIELD SIDE TABS	SHIELD TOP TABS	LOCATION TABS	VOIDED CIRCUITS
-------------------	------------------	------------------	-----------------	---------------	-----------------

ADD PCB THICKNESS FC NO: UCP2008-0143 DRAWN:JBELL 2007/07/24 CHKD:LSHMI DT 2007/07/30 APPR:FSM TH 2007/08/01	DESCRIPTION	QUALITY SYMBOLS =0 =0
--	-------------	-----------------------------

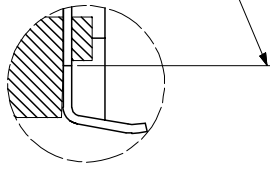
GENERAL TOLERANCES (UNLESS SPECIFIED)	
mm	INCH
4 PLACES ± .010	± .001
3 PLACES ± .010	± .010
2 PLACES ± 0.25	± .010
1 PLACE ± .010	± .010
ANGULAR ±1/2°	

DIMENSION STYLE	
IN/MM	
DRAWN BY	DATE
STAMBAUG	99/06/03
CHECKED BY	DATE
WIRKUS	99/06/03
APPROVED BY	DATE
EDGLEY	99/06/03
MATERIAL NO.	
DOCUMENT NO.	

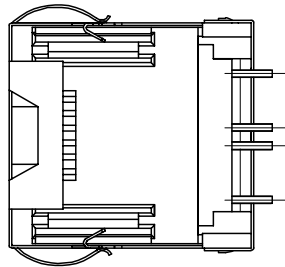
SCALE 4:1	DESIGN UNITS INCH	THIRD ANGLE PROJECTION
SINGLE PORT, SHIELDED SIZE 8, 8 CIRCUIT SMT MODJACK		
MOLEX INCORPORATED		
SD-44282-001	SHEET NO. 1 OF 2	

13 12 11 10 9 8 7 6 5 4 3 2 1

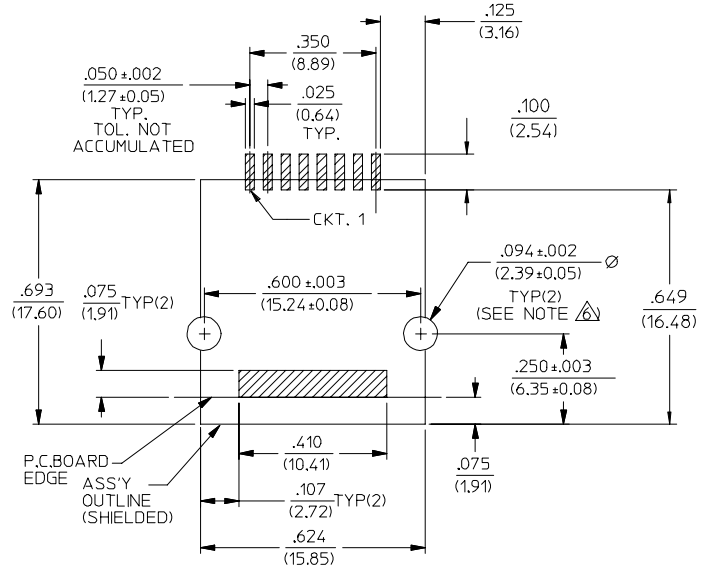
TERMINAL CUTOFF POINT



VIEW SHOWING TYPICAL TERMINAL CUTOFF OF TAIL (SEE NOTE 10) FOR VOIDED CIRCUITS.



TYPICAL VIEW SHOWING VOIDED CIRCUIT (CIRCUITS 2,3,6 & 7 SHOWN VOIDED)



PC BOARD LAYOUT FOR 8 POSITION HOUSING
(COMPONENT SIDE OF BOARD)

NOTES:
1. RECOMMENDED MINIMUM PCB THICKNESS: .034/0.86

SEE SHEET ONE FC NO: UCP2008-0143 DRAWN:JBELL 2007/07/24 CHKD:LSHMI DT 2007/07/30 APPR:FSM TH 2007/08/01 D2	QUALITY SYMBOLS ▽=0 ▽=0	GENERAL TOLERANCES (UNLESS SPECIFIED)		DIMENSION STYLE IN/MM		SCALE 4:1	DESIGN UNITS INCH	THIRD ANGLE PROJECTION	
		4 PLACES ± --- ± --- 3 PLACES ± --- ± .010 2 PLACES ± 0.25 ± --- 1 PLACE ± --- ± --- ANGULAR ±1/2°	mm INCH STAMBAUG 99/06/03 WIRKUS 99/06/03 EDGLEY 99/06/03	DRAWN BY DATE CHECKED BY DATE APPROVED BY DATE	TITLE SURFACE MOUNT MODULAR JACK W/ SHIELD	MATERIAL NO. SEE CHART	DOCUMENT NO. SD-44282-001	SHEET NO. 2 OF 2	
DRAFT WHERE APPLICABLE MUST REMAIN WITHIN DIMENSIONS		THIS DRAWING CONTAINS INFORMATION THAT IS PROPRIETARY TO MOLEX INCORPORATED AND SHOULD NOT BE USED WITHOUT WRITTEN PERMISSION							

12 11 10 9 8 7 6 5 4 3 2 1