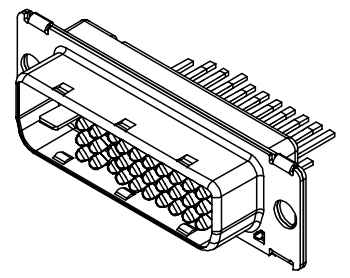
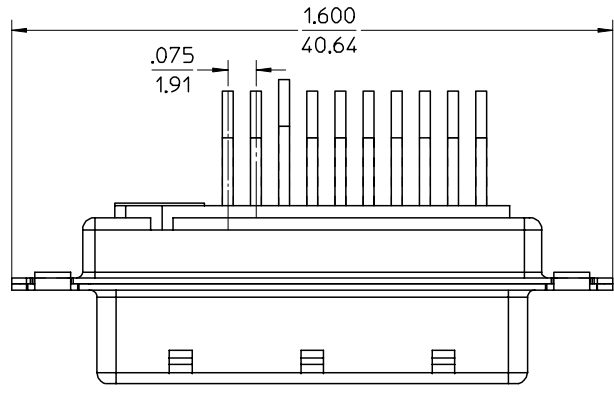
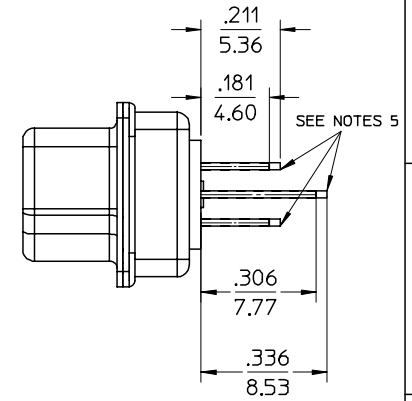
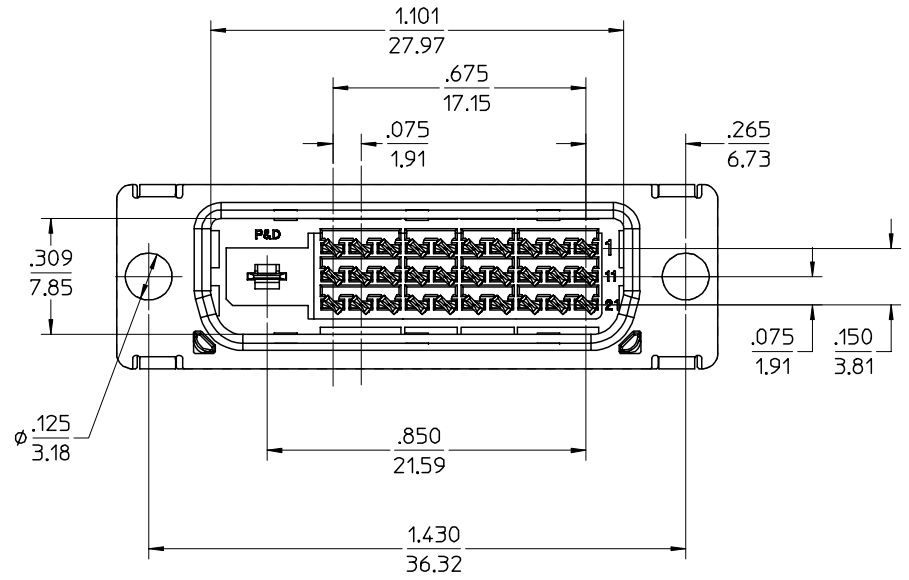
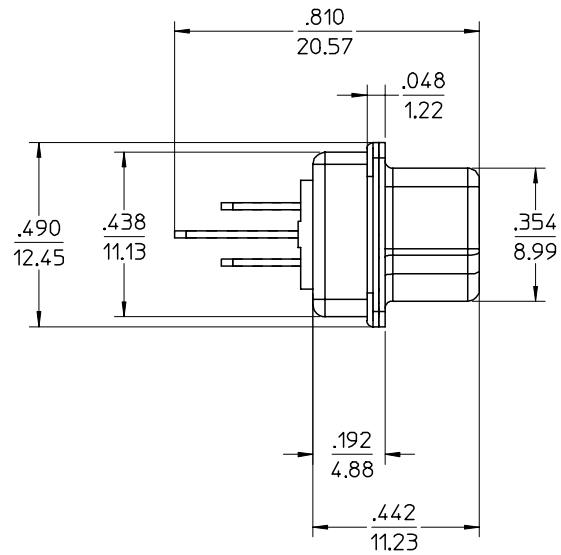


10 9 8 7 6 5 4 3 2 1

- NOTES:
- MATERIAL:  
HOUSING: HIGH TEMPERATURE THERMAL PLASTIC  
UL 94V-0, COLOR: BLACK  
TERMINAL : COPPER ALLOY  
SHIELD: STEEL ALLOY
  - FINISH:  
TERMINAL: SEE THE CHART FOR GOLD PLATING OVER 1.27 MICROMETER  
(50U) NICKEL IN CONTACT AREA AND  
3.81 MICROMETER (150 U") PURE TIN OVER 1.27  
MICROMETER (50U) NICKEL AT SOLDERING AREA.  
SHIELD: 3.81 MICROMETER (150U) BRIGHT TIN OVER 1.27  
MICROMETER (50U) NICKEL OVERALL.
  - PRODUCT SPECIFICATION: PS-71182.
  - PACKING: PARTS ARE TO BE PACKAGED 40 PCS PER TRAY.  
PER PK-67485-001.
  - 0.075 CONTACT: RECESS PIN ARE #8, #18, #28.



P&D-D STANDARD

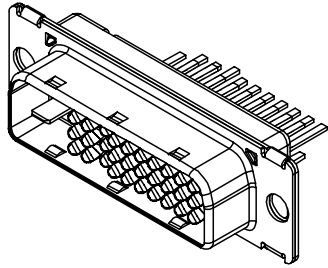


SEE NOTES 5

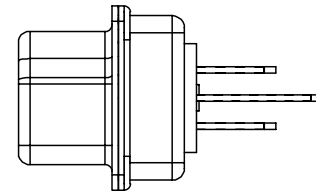
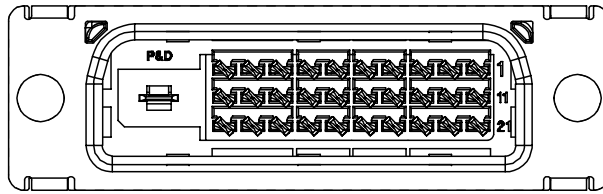
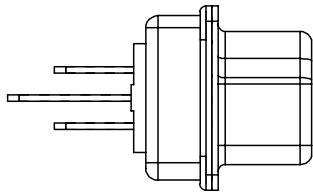
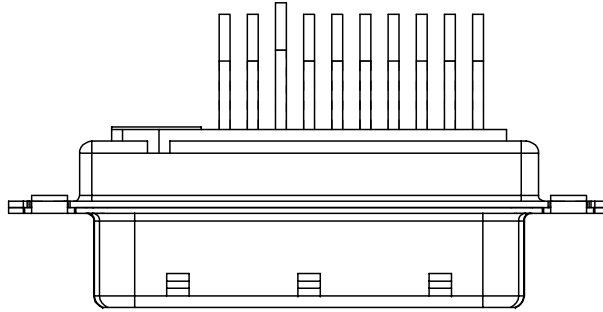
EC NO: DXUE 2005/03/03 DRWN:DXUE CHKD:HARVEY APPR:	QUALITY SYMBOLS ▽ = 0 ∇ = 0	GENERAL TOLERANCES (UNLESS SPECIFIED) <table border="1"> <thead> <tr> <th></th> <th>mm</th> <th>INCH</th> </tr> </thead> <tbody> <tr> <td>4 PLACES</td> <td>± .005</td> <td>± .0004</td> </tr> <tr> <td>3 PLACES</td> <td>± .003</td> <td>± .0002</td> </tr> <tr> <td>2 PLACES</td> <td>± 0.25</td> <td>± .01</td> </tr> <tr> <td>1 PLACE</td> <td>± 0.25</td> <td>± .01</td> </tr> <tr> <td colspan="3">ANGULAR ± 3 °</td> </tr> </tbody> </table>		mm	INCH	4 PLACES	± .005	± .0004	3 PLACES	± .003	± .0002	2 PLACES	± 0.25	± .01	1 PLACE	± 0.25	± .01	ANGULAR ± 3 °			SCALE 3:1	DESIGN UNITS INCH	THIRD ANGLE PROJECTION	REVISE ON CAD ONLY
		mm	INCH																					
	4 PLACES	± .005	± .0004																					
	3 PLACES	± .003	± .0002																					
2 PLACES	± 0.25	± .01																						
1 PLACE	± 0.25	± .01																						
ANGULAR ± 3 °																								
DESCRIPTION P&D ASSEMBLY	DIMENSION STYLE IN/MM	TITLE P&D ASSEMBLY PLUG CONNECTOR	DRAWN BY SASHIN	DATE 01/06/26	MOLEX INCORPORATED	SHEET NO. 1 OF 6																		
DRAFT WHERE APPLICABLE MUST REMAIN WITHIN DIMENSIONS	APPROVED BY MLAI	DATE 01/06/27	MATERIAL NO. SEE CHART	DOCUMENT NO. SD-67485-001	THIS DRAWING CONTAINS INFORMATION THAT IS PROPRIETARY TO MOLEX INCORPORATED AND SHOULD NOT BE USED WITHOUT WRITTEN PERMISSION	A3																		

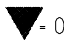
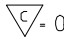
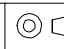
9 8 7 6 5 4 3 2 1

10 9 8 7 6 5 4 3 2 1



P&D-D REVERSED



DXUE	EC NO:	2005/03/03	<b>QUALITY SYMBOLS</b>  = 0  = 0	<b>GENERAL TOLERANCES (UNLESS SPECIFIED)</b>		SCALE 3:1	DESIGN UNITS INCH	 THIRD ANGLE PROJECTION	REVISE ON CAD ONLY																			
	DRWN:DXUE			<table border="1"> <thead> <tr> <th></th> <th>mm</th> <th>INCH</th> </tr> </thead> <tbody> <tr> <td>4 PLACES</td> <td>± ---</td> <td>± ---</td> </tr> <tr> <td>3 PLACES</td> <td>± ---</td> <td>± ---</td> </tr> <tr> <td>2 PLACES</td> <td>± 0.25</td> <td>± .01</td> </tr> <tr> <td>1 PLACE</td> <td>± 0.25</td> <td>± .01</td> </tr> <tr> <td colspan="3">ANGULAR ± 3 °</td> </tr> </tbody> </table>		mm	INCH		4 PLACES	± ---	± ---	3 PLACES	± ---	± ---	2 PLACES	± 0.25	± .01	1 PLACE	± 0.25	± .01	ANGULAR ± 3 °			DIMENSION STYLE IN/MM		TITLE		P&D ASSEMBLY PLUG CONNECTOR
		mm		INCH																								
	4 PLACES	± ---		± ---																								
3 PLACES	± ---	± ---																										
2 PLACES	± 0.25	± .01																										
1 PLACE	± 0.25	± .01																										
ANGULAR ± 3 °																												
CHKD:HARVEY		DRAFT WHERE APPLICABLE MUST REMAIN WITHIN DIMENSIONS	DRAWN BY SASHIN		DATE 01/06/26		MOLEX INCORPORATED		SHEET NO. 2 OF 6																			
APPR:			CHECKED BY VICTOR		DATE 01/06/27		MATERIAL NO. SEE CHART		DOCUMENT NO. SD-67485-001																			

9 8 7 6 5 4 3 2 1

10 9 8 7 6 5 4 3 2 1

F

E

D

C

B

A

F

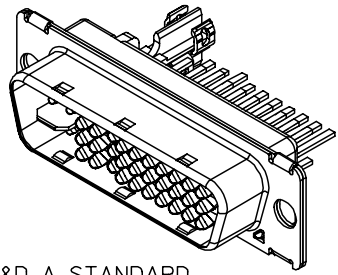
E

D

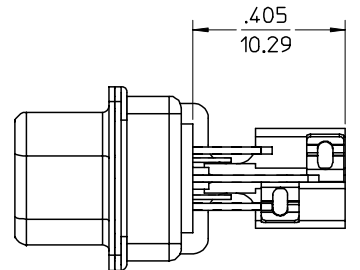
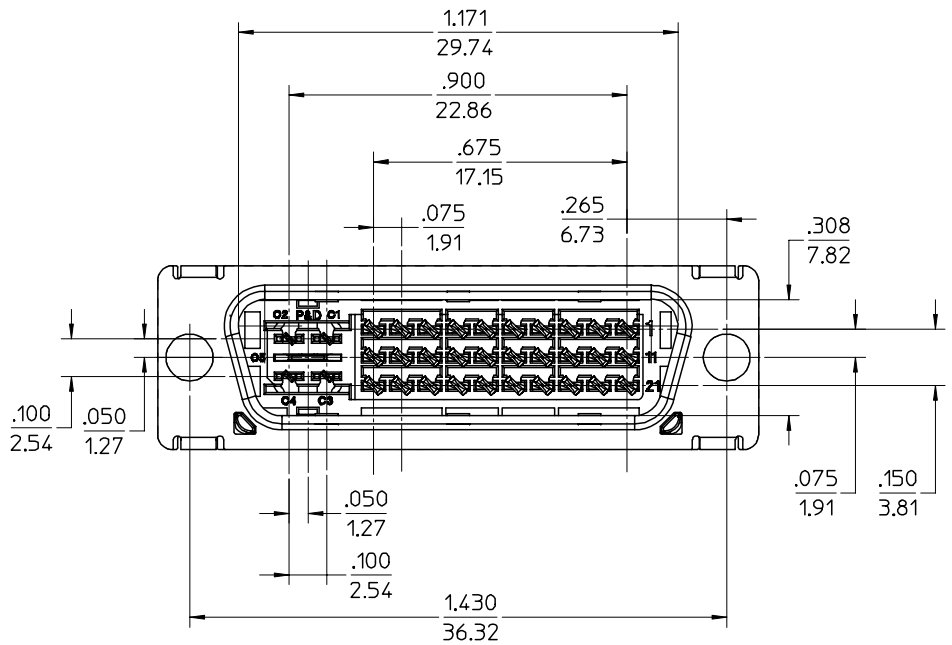
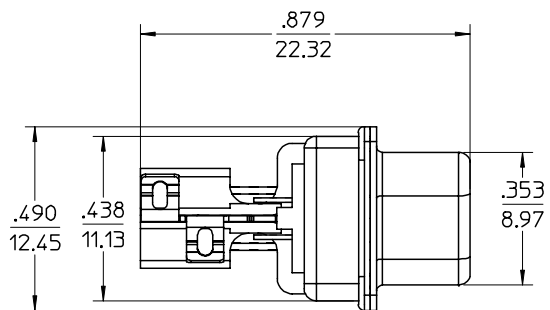
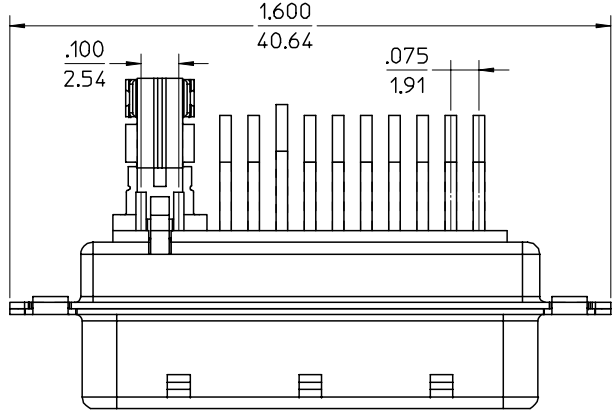
C

B

A



P&D-A STANDARD



EC NO: 2005/03/03 DXUE CHKD: HARVEY APPR:	QUALITY SYMBOLS	GENERAL TOLERANCES (UNLESS SPECIFIED)	SCALE 3:1	DESIGN UNITS INCH	THIRD ANGLE PROJECTION	REVISE ON CAD ONLY
	▽ = 0 ∇ = 0	4 PLACES ± --- ± --- 3 PLACES ± --- ± --- 2 PLACES ± 0.25 ± .01 1 PLACE ± 0.25 ± .01 ANGULAR ± 3 °	DIMENSION STYLE IN/MM DRAWN BY SASHIN DATE 01/06/26 CHECKED BY VICTOR DATE 01/06/27 APPROVED BY MLAI DATE 01/06/27	TITLE P&D ASSEMBLY PLUG CONNECTOR MOLEX MOLEX INCORPORATED		
	DRAFT WHERE APPLICABLE	MUST REMAIN WITHIN DIMENSIONS	MATERIAL NO. SEE CHART DOCUMENT NO. SD-67485-001 SHEET NO. 3 OF 6			
	THIS DRAWING CONTAINS INFORMATION THAT IS PROPRIETARY TO MOLEX INCORPORATED AND SHOULD NOT BE USED WITHOUT WRITTEN PERMISSION				A3	

9 8 7 6 5 4 3 2 1

10

9

8

7

6

5

4

3

2

1

F

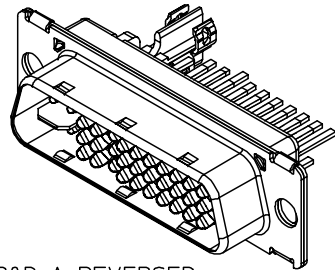
E

D

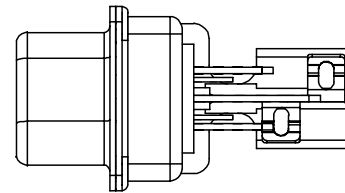
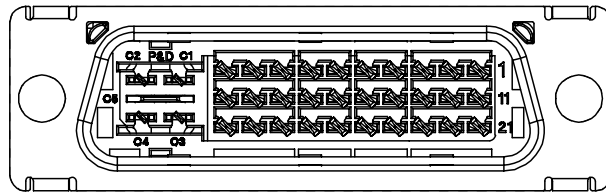
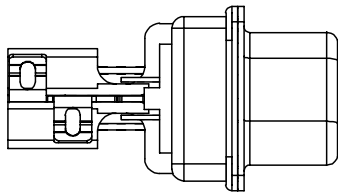
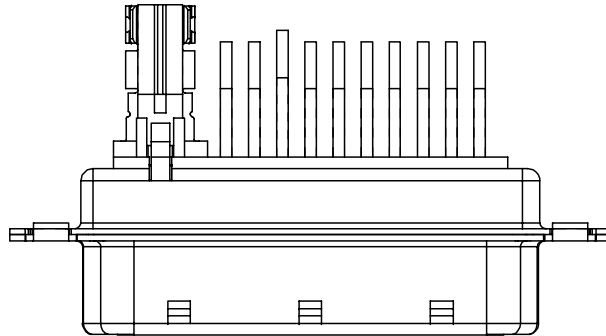
C

B

A



P&D-A REVERSED



EC NO: DXUE 2005/03/03 DRWN:DXUE CHKD:HARVEY APPR: REV	QUALITY SYMBOLS = 0 = 0	GENERAL TOLERANCES (UNLESS SPECIFIED) <table border="1"> <thead> <tr> <th></th> <th>mm</th> <th>INCH</th> </tr> </thead> <tbody> <tr> <td>4 PLACES</td> <td>± .---</td> <td>± .---</td> </tr> <tr> <td>3 PLACES</td> <td>± .---</td> <td>± .---</td> </tr> <tr> <td>2 PLACES</td> <td>± 0.25</td> <td>± .01</td> </tr> <tr> <td>1 PLACE</td> <td>± 0.25</td> <td>± .01</td> </tr> <tr> <td colspan="3">ANGULAR ± 3 °</td> </tr> </tbody> </table>		mm	INCH	4 PLACES	± .---	± .---	3 PLACES	± .---	± .---	2 PLACES	± 0.25	± .01	1 PLACE	± 0.25	± .01	ANGULAR ± 3 °			SCALE 3:1	DESIGN UNITS INCH	THIRD ANGLE PROJECTION	REVISE ON CAD ONLY
		mm	INCH																					
	4 PLACES	± .---	± .---																					
	3 PLACES	± .---	± .---																					
2 PLACES	± 0.25	± .01																						
1 PLACE	± 0.25	± .01																						
ANGULAR ± 3 °																								
DIMENSION STYLE IN/MM	TITLE P&D ASSEMBLY PLUG CONNECTOR	DRAWN BY SASHIN	DATE 01/06/26	CHECKED BY VICTOR	DATE 01/06/27	MOLEX INCORPORATED																		
DRAFT WHERE APPLICABLE MUST REMAIN WITHIN DIMENSIONS	APPROVED BY MLAI	DATE 01/06/27	MATERIAL NO. SEE CHART	DOCUMENT NO. SD-67485-001	SHEET NO. 4 OF 6	THIS DRAWING CONTAINS INFORMATION THAT IS PROPRIETARY TO MOLEX INCORPORATED AND SHOULD NOT BE USED WITHOUT WRITTEN PERMISSION																		
						A3																		

9

8

7

6

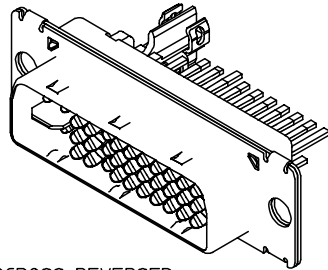
5

4

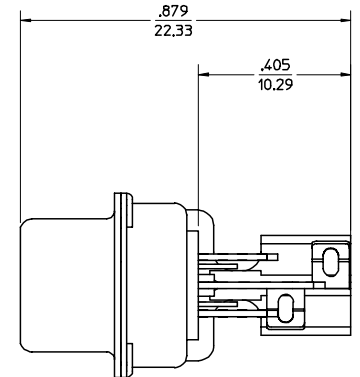
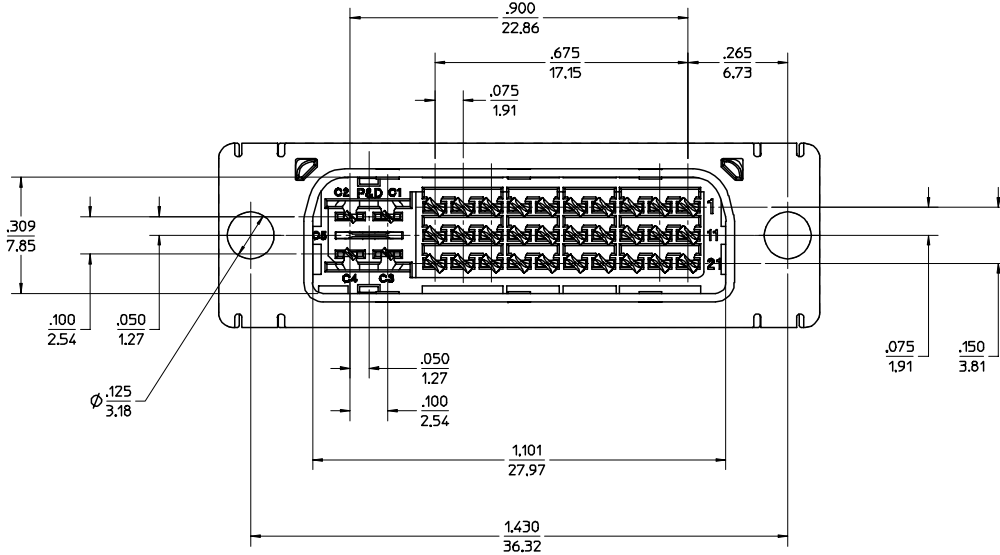
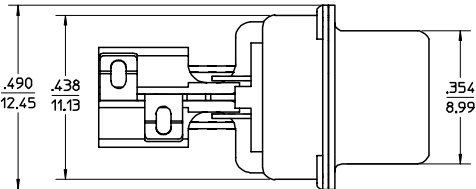
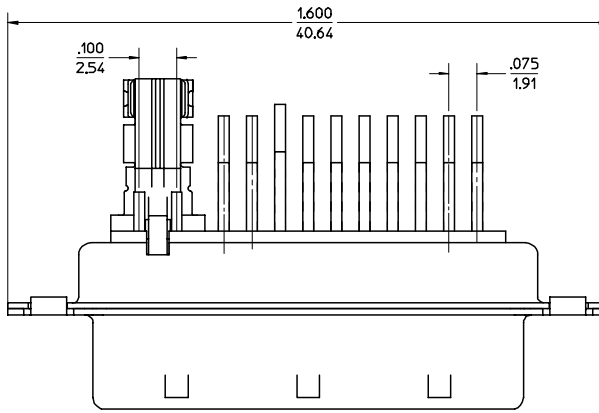
3

2

1



MICROCROSS REVERSED



SH2005-0266	QUALITY SYMBOLS	GENERAL TOLERANCES (UNLESS SPECIFIED)	SCALE 3:1	DESIGN UNITS INCH	THIRD ANGLE PROJECTION	REVISE ON CAD ONLY															
	▽ = 0 ∇ = 0	<table border="1"> <thead> <tr> <th></th> <th>mm</th> <th>INCH</th> </tr> </thead> <tbody> <tr> <td>4 PLACES</td> <td>± .005</td> <td>± .0005</td> </tr> <tr> <td>3 PLACES</td> <td>± .005</td> <td>± .0005</td> </tr> <tr> <td>2 PLACES</td> <td>± 0.25</td> <td>± .01</td> </tr> <tr> <td>1 PLACE</td> <td>± 0.25</td> <td>± .01</td> </tr> </tbody> </table>		mm	INCH	4 PLACES	± .005	± .0005	3 PLACES	± .005	± .0005	2 PLACES	± 0.25	± .01	1 PLACE	± 0.25	± .01	DIMENSION STYLE IN/MM		TITLE	
			mm	INCH																	
		4 PLACES	± .005	± .0005																	
3 PLACES	± .005	± .0005																			
2 PLACES	± 0.25	± .01																			
1 PLACE	± 0.25	± .01																			
DRAFT WHERE APPLICABLE MUST REMAIN WITHIN DIMENSIONS	DRAWN BY SASHIN CHECKED BY VICTOR APPROVED BY MLAI	DATE 01/06/26 DATE 01/06/27 DATE 01/06/27	P&D ASSEMBLY PLUG CONNECTOR MOLEX INCORPORATED SEE CHART SD-67485-001																		
EC NO: SH2005-0266 DRWN:DXUE CHKD:HARVEY APPR:	REV DESCRIPTION	DRAFT WHERE APPLICABLE MUST REMAIN WITHIN DIMENSIONS	MATERIAL NO. SEE CHART DOCUMENT NO. SD-67485-001 SHEET NO. 5 OF 6	THIS DRAWING CONTAINS INFORMATION THAT IS PROPRIETARY TO MOLEX INCORPORATED AND SHOULD NOT BE USED WITHOUT WRITTEN PERMISSION																	

10 9 8 7 6 5 4 3 2 1

PART NUMBER	DESCRIPTION	MATERIAL OF HOUSING	Q'TY OF 0.075 CONTACT
67485-0001	P&D-D STANDARD 30U* AU	POLYSTER (PBT)	30
67485-0002	P&D-D REVERSED 30U* AU		
67485-0003	P&D-A STANDARD 30U* AU		
67485-0004	P&D-A REVERSED 30U* AU		
67485-0005	P&D-D STANDARD 30U* AU	POLYSTER (PCT)	30
67485-0006	P&D-D REVERSED 30U* AU		
67485-0007	P&D-A STANDARD 30U* AU		
67485-0008	P&D-A REVERSED 30U* AU		
67485-0009	P&D-D STANDARD AU FLASH	POLYSTER (PBT)	30
67485-0010	P&D-D REVERSED AU FLASH		
67485-0011	P&D-A STANDARD AU FLASH		
67485-0012	P&D-A REVERSED AU FLASH		
67485-0013	P&D-D STANDARD AU FLASH	POLYSTER (PCT)	30
67485-0014	P&D-D REVERSED AU FLASH		
67485-0015	P&D-A STANDARD AU FLASH		
67485-0016	P&D-A REVERSED AU FLASH		
67485-0017	P&D-A STANDARD 30U* AU	POLYSTER (PBT)	20
67485-0018	P&D-A STANDARD 30U* AU	POLYSTER (PCT)	LOAD CKT:
67485-0019	P&D-A STANDARD AU FLASH	POLYSTER (PBT)	1~10
67485-0020	P&D-A STANDARD AU FLASH	POLYSTER (PCT)	21~30
67485-0021	MICROCROSS REVER. 30U* AU	POLYSTER (PBT)	30
67485-0022	MICROCROSS REVER. 30U* AU	POLYSTER (PCT)	
67485-0023	MICROCROSS REVER. AU FLASH	POLYSTER (PBT)	
67485-0024	MICROCROSS REVER. AU FLASH	POLYSTER (PCT)	
67485-0025	P&D-A STANDARD AU FLASH	POLYSTER (PBT)	29 VOID:
67485-0026	P&D-A STANDARD AU FLASH	POLYSTER (PCT)	#PIN 13

DXUE  
 EC NO: 2005/03/03  
 DRAWN:DXUE  
 CHKD:HARVEY  
 APPR:

QUALITY SYMBOLS  
 ▽ = 0  
 ∇ = 0  
 REV DESCRIPTION

GENERAL TOLERANCES (UNLESS SPECIFIED)

	mm	INCH
4 PLACES	± .005	± .0004
3 PLACES	± .005	± .0004
2 PLACES	± 0.25	± .01
1 PLACE	± 0.25	± .01
ANGULAR ± 3 °		

DRAFT WHERE APPLICABLE  
 MUST REMAIN WITHIN DIMENSIONS

SCALE 3:1  
 DESIGN UNITS INCH  
 DIMENSION STYLE IN/MM  
 DRAWN BY SASHIN DATE 01/06/26  
 CHECKED BY VICTOR DATE 01/06/27  
 APPROVED BY MLAI DATE 01/06/27

THIRD ANGLE PROJECTION  
 REVISE ON CAD ONLY  
 TITLE P&D ASSEMBLY PLUG CONNECTOR  
 MOLEX MOLEX INCORPORATED  
 MATERIAL NO. SEE CHART DOCUMENT NO. SD-67485-001 SHEET NO. 6 OF 6  
 THIS DRAWING CONTAINS INFORMATION THAT IS PROPRIETARY TO MOLEX INCORPORATED AND SHOULD NOT BE USED WITHOUT WRITTEN PERMISSION A3

F  
E  
D  
C  
B  
A

F  
E  
D  
C  
B  
A

9 8 7 6 5 4 3 2 1