

MATERIALS AND FINISHES

BODY ZINC ALLOY
PLATED NICKEL

CENTER CONTACT PHOSPHOR BRONZE
PLATED GOLD

INSULATOR POLYPROPYLENE (94-V0)

MOUNTING POST PHOSPHOR BRONZE
PLATED TIN

SOLDER TAIL COPPER OVER STEEL
PLATED TIN

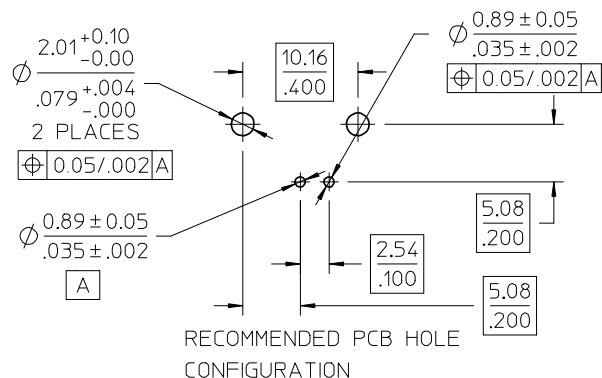
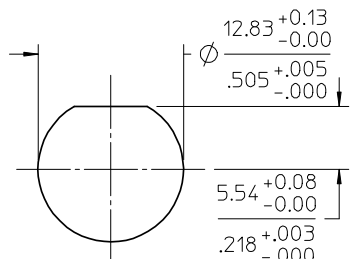
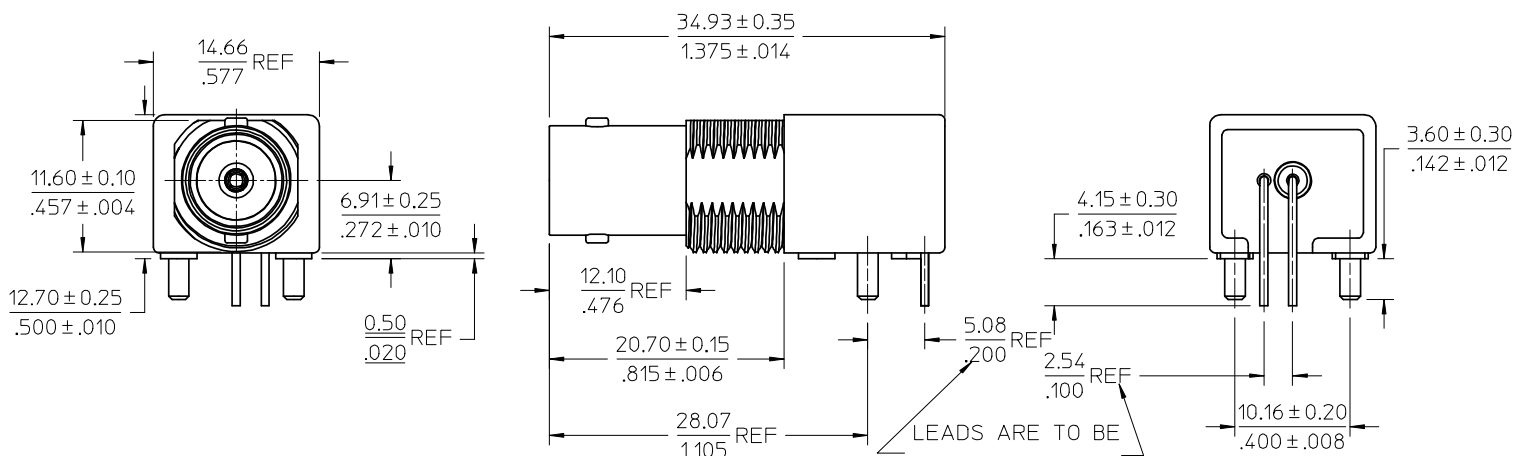
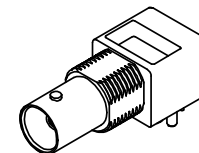
JAM NUT BRASS
PLATED NICKEL

LOCK WASHER PHOSPHOR BRONZE
PLATED NICKEL

BNC JACK
75 OHM
INTERFACE

1/2-28 UNEF-2A

TOP VIEW



RECOMMENDED MOUNTING HOLE
PANEL THICKNESS: 5.50 (.216) MAX
RECOMMENDED MOUNTING TORQUE:
1.36 N-m (12 INCH LBS) MAX

RECOMMENDED PCB HOLE
CONFIGURATION

PS-73598-0051	PRODUCT SPECIFICATION
SPECIFICATION	DESCRIPTION

73101-0401	WITH JAM NUT AND WASHER
73101-0400	WITHOUT JAM NUT AND WASHER
PART NO.	DESCRIPTION

CHG: 94V-0 WAS 94-VZ EC NO: URF2008-0496 DRWN: WIENER 2008/04/01 CHKD: SHAH 2008/04/01 APPR: WIENER 2008/04/01 REV: A2	QUALITY SYMBOLS ▽=0 ▽=0	GENERAL TOLERANCES (UNLESS SPECIFIED) mm INCH 4 PLACES ± --- ± --- 3 PLACES ± --- ± --- 2 PLACES ± --- ± --- 1 PLACE ± --- ± --- ANGULAR ± ---°	DIMENSION STYLE MM/IN DRAWN BY MICHAEL DATE 2007/06/07 CHECKED BY KERRIE DATE 2007/06/07 APPROVED BY MISEN DATE 2007/06/07	SCALE DESIGN UNITS METRIC THIRD ANGLE PROJECTION	TITLE BNC JACK, R/A PCB, 75 OHMS DIE CAST, RECEPTACLE BNC-J/RA/PCB	MATERIAL NO. SEE TABLE	DOCUMENT NO. SD-73101-040	SHEET NO. 1 OF 1	
		DRAFT WHERE APPLICABLE MUST REMAIN WITHIN DIMENSIONS							
		THIS DRAWING CONTAINS INFORMATION THAT IS PROPRIETARY TO MOLEX INCORPORATED AND SHOULD NOT BE USED WITHOUT WRITTEN PERMISSION							