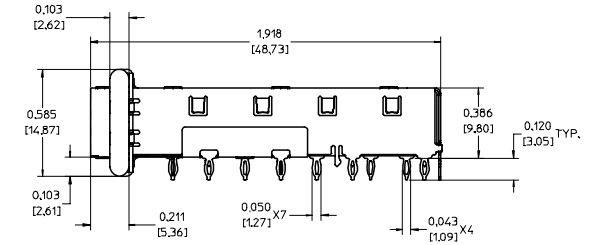
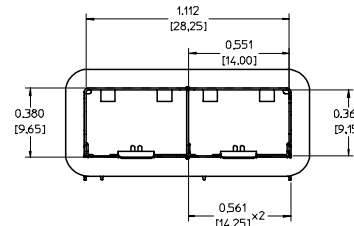
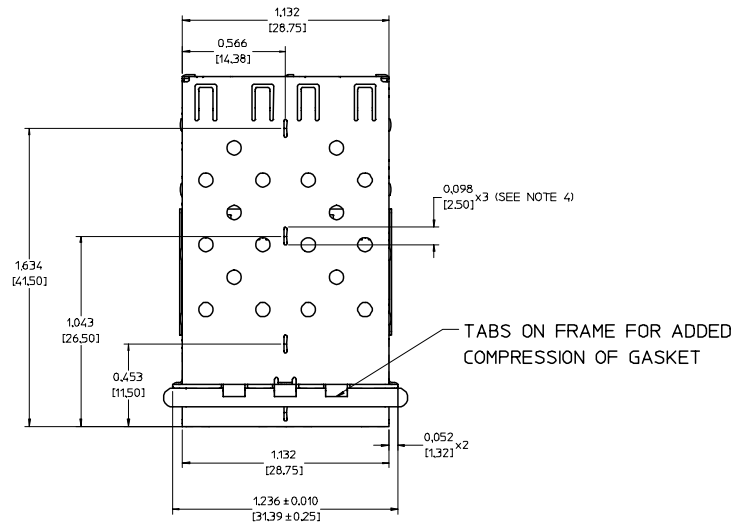
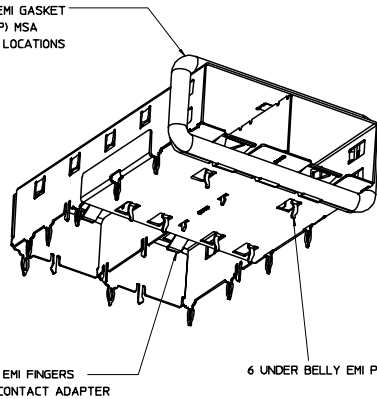


NOTES:

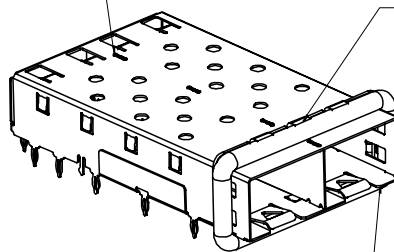
- PRESS FIT LEGS 0.120" LONG-
0.062 [1.57] MINIMUM PCB THICKNESS FOR SINGLE SIDED USE.
THIS CAGE IS NOT DESIGNED FOR USE IN BELLY-TO-BELLY APPLICATIONS.
- MATERIAL: COPPER ALLOY
PLATING: PRE-PLATED NICKEL
- REFERENCE DOCUMENTS:
PRODUCT SPECIFICATION: PS-74728-000
COSMETIC SPECIFICATIONS: WI-HP-2774 AND WI-HPA-7-0093
TEST SUMMARY: TS-74722-0001.
- MATES WITH SERIES 74727, LIGHT PIPE COVER ASSEMBLY.
- THIS PART MEETS THE RESTRICTION OF HAZARDOUS SUBSTANCES IN ELECTRICAL AND ELECTRONIC EQUIPMENT (ROHS) DIRECTIVE (2002/95/EC).



360° ELASTOMER EMI GASKET
COMPLIES WITH (SFP) MSA
BOARD AND BEZEL LOCATIONS



INNER WALL TABS ARE COINED
OVER BASE AND COVER FOR RIGIDITY

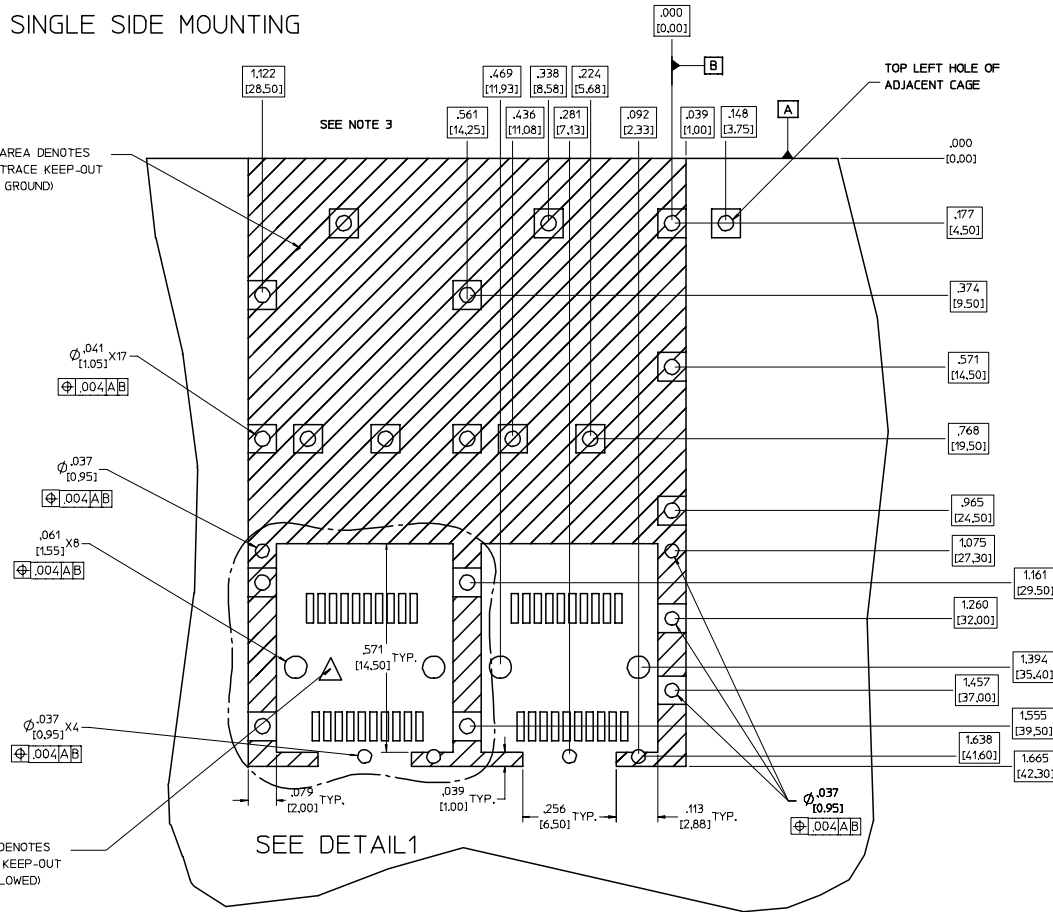


DIMENSIONS OF EACH INNER CAGE DESIGNED
TO FUNCTION WITH SMALL FORM-FACTOR
PLUGGABLE (SFP) TRANSCEIVER

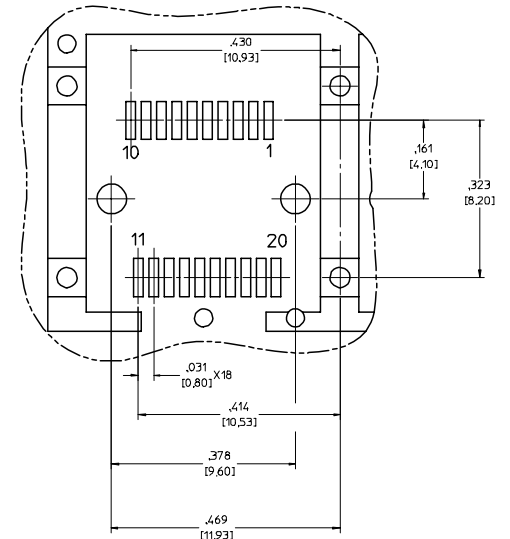
ENTER DESCRIPTION EC NO: UST2006-0073 DRAWN BY: DRINKS/IMONSO 2006/01/17 CHECKED BY: CHFK/BRUSSELL 2006/01/28 APPR: BRUSSELL 2006/01/28	QUALITY SYMBOLS	GENERAL TOLERANCES (UNLESS SPECIFIED)		DIMENSION STYLE	SCALE	DESIGN UNITS	THIRD ANGLE PROJECTION	
	▽=0 ▽=0	mm	INCH	IN/MM	3:1	METRIC		
		4 PLACES ± --- ± ---	3 PLACES ± --- ± .005	DRAWN BY: KS IMONSO	DATE: 2005/10/06	TITLE: 1X2 SFP GANGED CAGE ASSY, FRAME W/ TABS PRE-PLATED		
		2 PLACES ± 0.13 ± .010	1 PLACE ± 0.25 ± ---	CHECKED BY: BRUSSELL	DATE: 2005/10/06	MOLEX INCORPORATED		
	ANGULAR ± 1 °		APPROVED BY: BRUSSELL	DATE: 2005/10/06	MATERIAL NO: 747220004	DOCUMENT NO: SD-74722-004	SHEET NO: 1 OF 4	
	DRAFT WHERE APPLICABLE MUST REMAIN WITHIN DIMENSIONS		SIZE: D	THIS DRAWING CONTAINS INFORMATION THAT IS PROPRIETARY TO MOLEX INCORPORATED AND SHOULD NOT BE USED WITHOUT WRITTEN PERMISSION				

PCB LAYOUT FOR SINGLE SIDE MOUNTING

CROSS-HATCHED AREA DENOTES COMPONENT AND TRACE KEEP-OUT (EXCEPT CHASSIS GROUND)



DETAIL1
SCALE 8:1

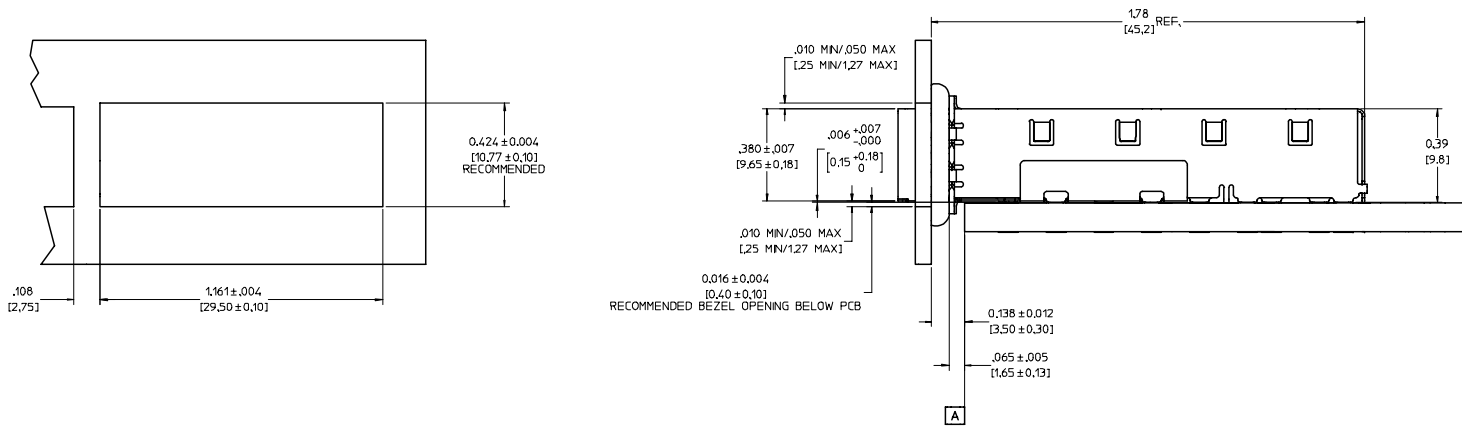


NOTES:

1. PADS AND VIAS GO TO CHASSIS GROUND, (19 PLACES).
RECOMMENDED PADS TO BE 2mm SQUARE.
2. PLATING OPTIONAL FOR THROUGH HOLES (6 PLACES)
3. RECOMMENDED PLATING INCLUDES HASL, IMMERSION (GOLD, SILVER, OR TIN), AND OSP.
4. HOLE PATTERN REPEATS FOR EACH PORT.
SPACING BETWEEN PORTS IS 0.561 [14.25]
5. CONNECTOR PAD LAYOUT PER SFP MSA. WILL ACCOMMODATE MOLEX CONNECTOR SERIES 74441 OR EQUIVALENT.

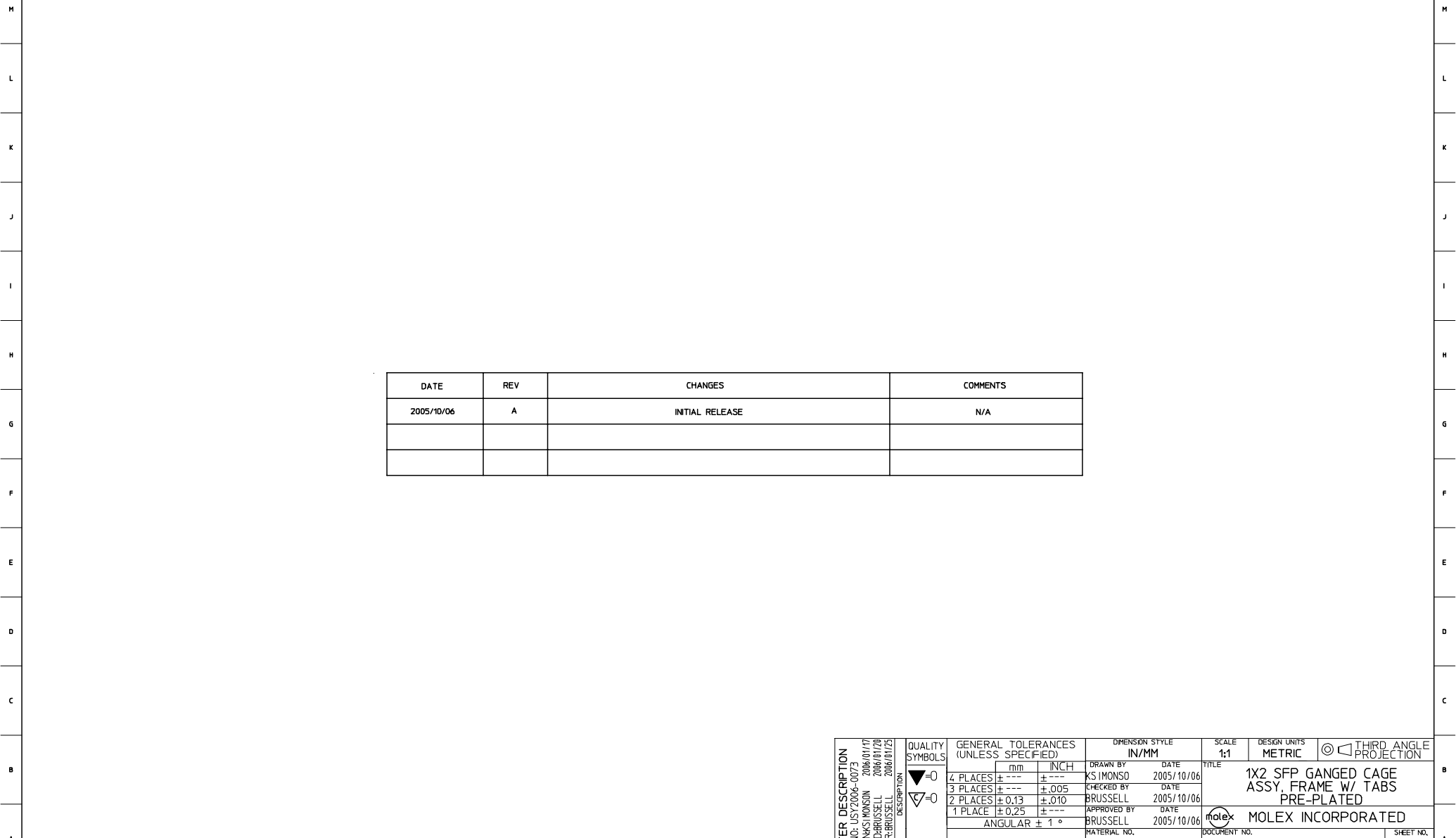
ENTER DESCRIPTION EC NO: UST2006-0073 DRINKS:MONSON 2006/01/17 CHKD:BRUSSELL 2006/01/28 APPR:BRUSSELL 2006/01/28 A	QUALITY SYMBOLS ▽=0 ▽=0	GENERAL TOLERANCES (UNLESS SPECIFIED)		DIMENSION STYLE IN/MM		SCALE 6:1	DESIGN UNITS METRIC	THIRD ANGLE PROJECTION	
		4 PLACES ± --- ± --- 3 PLACES ± --- ± .005 2 PLACES ± 0.13 ± .010 1 PLACE ± 0.25 ± --- ANGULAR ± 1 °	mm INCH	DRAWN BY KS IMONSO	DATE 2005/10/06	TITLE 1X2 SFP GANGED CAGE ASSY, FRAME W/ TABS PRE-PLATED			
		DRAFT WHERE APPLICABLE MUST REMAIN WITHIN DIMENSIONS		MATERIAL NO. 747220004	DATE 2005/10/06	DOCUMENT NO. SD-74722-004			
				SIZE D	THIS DRAWING CONTAINS INFORMATION THAT IS PROPRIETARY TO MOLEX INCORPORATED AND SHOULD NOT BE USED WITHOUT WRITTEN PERMISSION				

BEZEL AND BOARD POSITION DIMENSIONS FOR SINGLE SIDE MOUNTING



ENTER DESCRIPTION EC NO: USY2006-0073 DRWNS: MONSON 2006/01/17 CHKD: BRUSSELL 2006/01/28 APPR: BRUSSELL 2006/01/28	QUALITY SYMBOLS ▽=0 ▽=0	GENERAL TOLERANCES (UNLESS SPECIFIED)		DIMENSION STYLE IN/MM		SCALE 4:1	DESIGN UNITS METRIC	THIRD ANGLE PROJECTION
		4 PLACES ± --- ± --- 3 PLACES ± --- ± .005 2 PLACES ± 0.13 ± .010 1 PLACE ± 0.25 ± --- ANGULAR ± 1 °	mm INCH	DRAWN BY KS IMONSO	DATE 2005/10/06	TITLE 1X2 SFP GANGED CAGE ASSY, FRAME W/ TABS PRE-PLATED	MOLEX INCORPORATED	MATERIAL NO. 747220004
DRAFT WHERE APPLICABLE MUST REMAIN WITHIN DIMENSIONS		THIS DRAWING CONTAINS INFORMATION THAT IS PROPRIETARY TO MOLEX INCORPORATED AND SHOULD NOT BE USED WITHOUT WRITTEN PERMISSION						

20 19 18 17 16 15 14 13 12 11 10 9 8 7 6 5 4 3 2 1



DATE	REV	CHANGES	COMMENTS
2005/10/06	A	INITIAL RELEASE	N/A

ENTER DESCRIPTION EC NO: UST2006-0073 DRINKS MONSON 2006/01/17 CHFK:BRUSSELL 2006/01/28 APPR:BRUSSELL 2006/01/28 A	QUALITY SYMBOLS ▽=0 ▽=0	GENERAL TOLERANCES (UNLESS SPECIFIED)		DIMENSION STYLE IN/MM	SCALE 1:1	DESIGN UNITS METRIC	THIRD ANGLE PROJECTION
		4 PLACES ± --- ± --- 3 PLACES ± --- ± .005 2 PLACES ± 0.13 ± .010 1 PLACE ± 0.25 ± --- ANGULAR ± 1 °	DRAWN BY KS IMONSO 2005/10/06 CHECKED BY BRUSSELL 2005/10/06 APPROVED BY BRUSSELL 2005/10/06	TITLE 1X2 SFP GANGED CAGE ASSY. FRAME W/ TABS PRE-PLATED		MATERIAL NO. 747220004	DOCUMENT NO. SD-74722-004
DRAFT WHERE APPLICABLE MUST REMAIN WITHIN DIMENSIONS		THIS DRAWING CONTAINS INFORMATION THAT IS PROPRIETARY TO MOLEX INCORPORATED AND SHOULD NOT BE USED WITHOUT WRITTEN PERMISSION					

19 18 17 16 15 14 13 12 11 10 9 8 7 6 5 4 3 2 1