

1-phase filter for THT mounting in flat aluminum housing

Standard- or Medical-Filter



### Description

- Chassis:  
PCB mounted, from top
- Line filter in standard and medical version, 1-stage, standard attenuation
- For PCB mounting

### Approvals

- VDE License Number: 40004673
- UL License Number: E72928

### Characteristics

- Aluminum case provides good shielding
- Designed for standard applications
- Protection against interference voltage from the mains  
Possible interferences generated in the equipment are strongly attenuated
- Universal line filter for standard applications
- Qualified for use in equipment according IEC/EN 60950

### Other versions on request

- Medical version M80

### References

[General Product Information](#)

### Weblinks

[Approvals](#), [RoHS](#), [CHINA-RoHS](#), [e-Store](#), [SCHURTER-Stock-Check](#), [Distributor-Stock-Check](#)

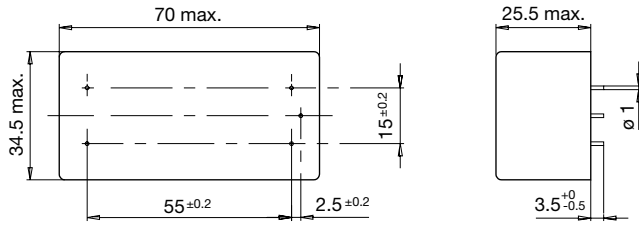
### Technical Data

Ratings IEC	2 - 16A @ Ta 40 °C / 250VAC; Hz 50
Ratings UL/CSA	2 - 16A @ Ta 40 °C / 125VAC; 60Hz
Leakage Current	standard < 0.5mA (250V / 60Hz)
Dielectric Strength	> 1.7kVDC between L-N > 2.7kVDC between L/N-PE Test voltage (2 sec)
Allowable Operation Temp.	-25 °C to 100 °C
Climatic Category	25/100/21 acc. to IEC 60068-1
Protection Class	Suitable for appliances with protection class I acc. to IEC 61140
Terminal	For PCB mounting , tin-plated
Material: Housing	Aluminum

Line Filter	Standard and Medical Version, IEC 60939, IEC 60601-1, UL 1283, UL 544, EN 133 200, CSA C22.2 no. 8 <a href="#">Technical details</a>
MTBF	> 200'000h acc. to MIL-HB-217 F

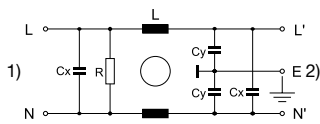
## Dimensions

Case 72



## Diagrams

Standard version



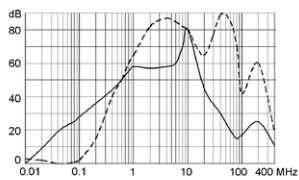
- 1) Line
- 2) Load

## Attenuation Loss

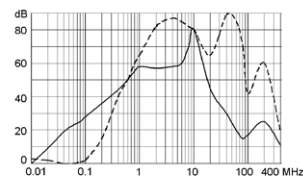
Standard version

--- differential mode \_\_\_\_ common mode

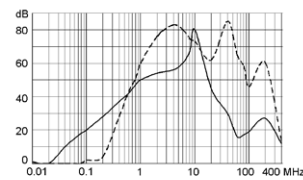
2 A



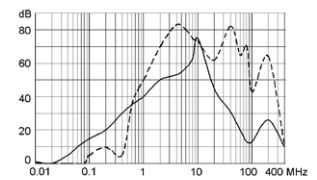
4 A



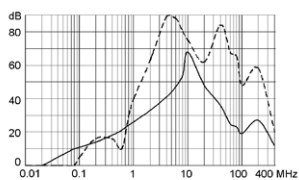
6 A



10 A

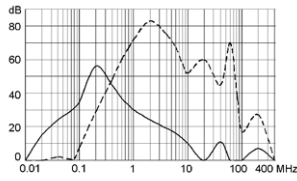


16 A

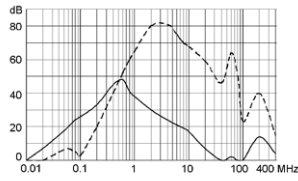


Medical version (M5)

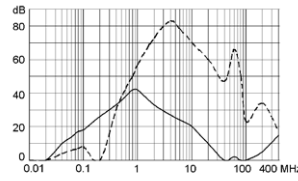
2 A



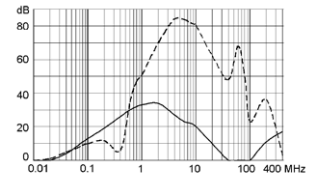
4 A



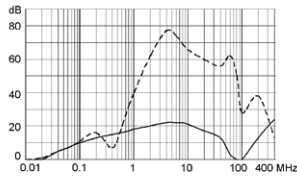
6 A



10 A



16 A



## Variants

[Distributor-Stock-Check](#) | [SCHURTER-Stock-Check](#) | [e-Store](#)

Rated Current [A]	Filter-Type	L [mH]	Cx (X2) [nF]	Cy (Y2) [nF]	R [MΩ]	Weight [g]	Case	Order Number
2	Standard Version	2 x 8	100	4.7	1	114	72	5500.2021
4	Standard Version	2 x 3.5	100	4.7	1	114	72	5500.2022
6	Standard Version	2 x 1.8	100	4.7	1	115	72	5500.2023
10	Standard Version	2 x 0.82	100	4.7	1	115	72	5500.2024
16	Standard Version	2 x 0.65	100	4.7	1	115	72	5500.2025
2	Medical Version (M5)	2 x 8	100	-	1	114	72	5500.2106
4	Medical Version (M5)	2 x 3.5	100	-	1	114	72	5500.2107
6	Medical Version (M5)	2 x 1.8	100	-	1	115	72	5500.2108
10	Medical Version (M5)	2 x 0.82	100	-	1	115	72	5500.2109
16	Medical Version (M5)	2 x 0.65	100	-	1	115	72	5500.2110

Packaging unit

10 Pcs