

Inlet filter, front- or rear side mounting, line switch 1-/2-pole

Standard- or Medical-Filter



new

Screw-On Version
from front sideSnap-In Version
from front sideScrew-On Version
from rear side

C14



70° C

**Description**

- Panel Mount:
Screw-on version from front or rear side, snap-in version from front side
- 3 Functions:
Inlet Protection class I, Line switch 1- or 2-pole, Line filter in standard and medical version
- Quick connect terminals 6.3 x 0.8 mm
- Alternative: version without line filter [DC11](#)
- Substitute for type [KFB1](#); [KFB2](#)

Approvals

- VDE License Number: 40001522
- UL License Number: E72928

Characteristics

- Compact design with optimal shielding
- Rear side mounting for efficient cost-saving assembly
- All single elements are already wired
- Line switch non-illuminated or illuminated
- Marquard switch for high inrush currents
- Universal line filter for standard applications
- Ideal for application with high transient loads
- Qualified for use in equipment according IEC/EN 60950

Other versions on request

- Solder terminals
- Other rocker marking
- Capacitance CX1
- Medical version M80

References

[General Product Information](#)

Weblinks

[Approvals](#), [RoHS](#), [CHINA-RoHS](#), [e-Store](#), [SCHURTER-Stock-Check](#), [Distributor-Stock-Check](#)

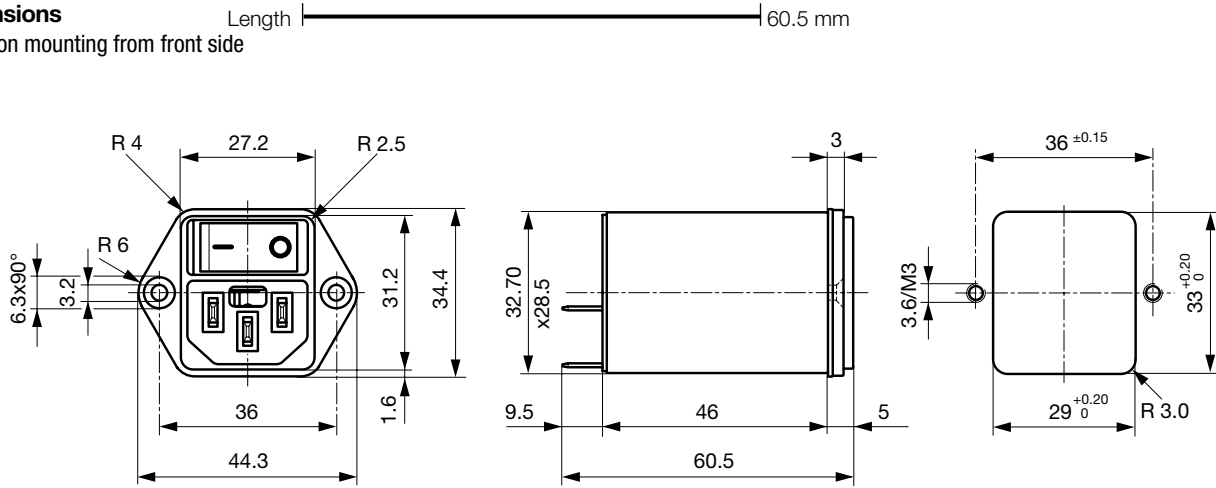
Technical Data

| | |
|---------------------------|--|
| Ratings IEC | 1 - 10A @ Ta 40 °C / 250 VAC; 50Hz |
| Ratings UL/CSA | 1 - 10A @ Ta 40 °C / 125 VAC; 60Hz |
| Leakage Current | standard < 0.5 mA (250 V / 60Hz) medical < 5 µA (250 V / 60 Hz) |
| Dielectric Strength | > 1.7 kVDC between L-N > 2.7 kVDC between L/N-PE Test voltage (2 sec) |
| Allowable Operation Temp. | -25 °C to 85 °C |
| Climatic Category | 25/085/21 acc. to IEC 60068-1 |
| Degree of Protection | from front side IP 40 acc. to IEC 60529 |
| Protection Class | Suitable for appliances with protection class I acc. to IEC 61140 |
| Terminal | Quick connect terminals 6.3 x 0.8 mm |
| Panel Thickness s | Screw-on: max 8mm Mounting screw torque max 0.5Nm Snap-in: 1 mm to 3mm |
| Material: Housing | Thermoplastic, black, UL 94V-0 |

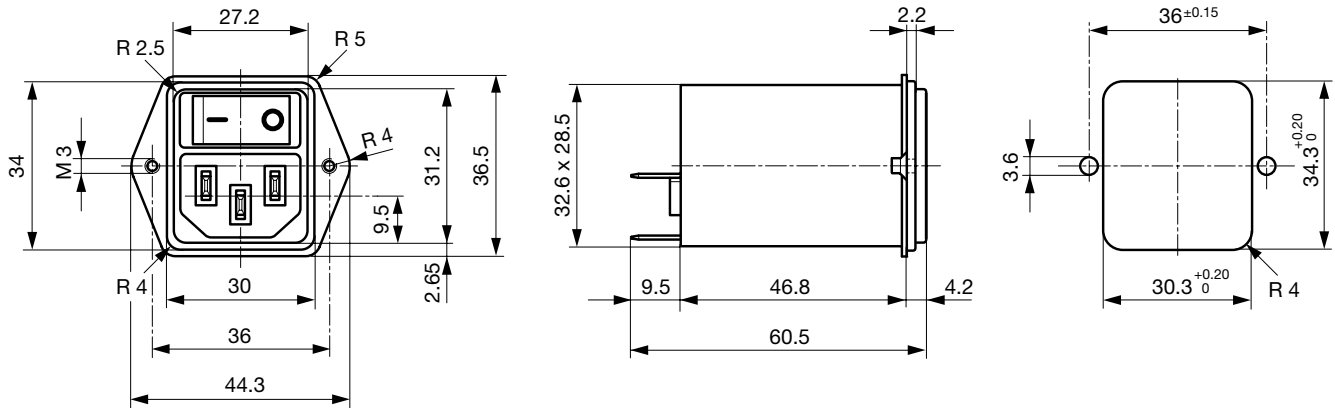
| | |
|--------------------------|---|
| Appliance-Inlet /-Outlet | C14 acc. to IEC/EN 60320-1, UL 498, CSA C22.2 no. 42 (for cold condition) pin-temperature 70 °C, 10A, Protection class I |
| Line Switch | Rocker switch 1 or 2 pole, non-illuminated or illuminated, acc. to IEC 61058-1 Technical details |
| Line Filter | Standard and Medical Version, IEC 60939, IEC 60601-1, UL 1283, UL 544, EN 133 200, CSA C22.2 no. 8 Technical details |
| MTBF | > 1'900'000h acc. to MIL-HB-217 F |

Dimensions

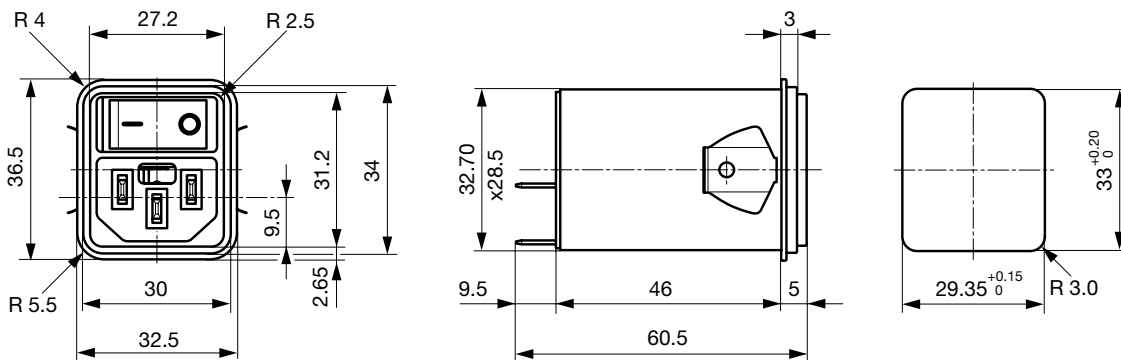
Screw-on mounting from front side



Screw-On Version from rear side (metal flange)



Snap-in mounting from front side

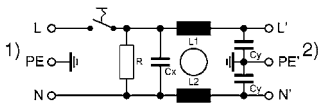


Technical Data of Filter-Components

| Rated Current [A] | Filter-Type | Inductances L [mH] | Capacitance CX [nF] | Capacitance CY [nF] | R [MΩ] |
|-------------------|-----------------------|--------------------|---------------------|---------------------|--------|
| 1 | Standard Version | 2 x 10 | 100 | 2.2 | 1 |
| 2 | Standard Version | 2 x 4 | 100 | 2.2 | 1 |
| 4 | Standard Version | 2 x 1.5 | 100 | 2.2 | 1 |
| 6 | Standard Version | 2 x 0.8 | 100 | 2.2 | 1 |
| 10 | Standard Version | 2 x 0.3 | 100 | 2.2 | 1 |
| 1 | Medical Version (M5) | 2 x 10 | 100 | - | 1 |
| 2 | Medical Version (M5) | 2 x 4 | 100 | - | 1 |
| 4 | Medical Version (M5) | 2 x 1.5 | 100 | - | 1 |
| 6 | Medical Version (M5) | 2 x 0.8 | 100 | - | 1 |
| 10 | Medical Version (M5) | 2 x 0.3 | 100 | - | 1 |
| 1 | Medical Version (M80) | 2 x 10 | 100 | 0.47 | 1 |
| 2 | Medical Version (M80) | 2 x 4 | 100 | 0.47 | 1 |
| 4 | Medical Version (M80) | 2 x 1.5 | 100 | 0.47 | 1 |
| 6 | Medical Version (M80) | 2 x 0.8 | 100 | 0.47 | 1 |
| 10 | Medical Version (M80) | 2 x 0.3 | 100 | 0.47 | 1 |

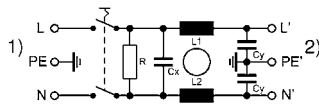
Diagrams

Standard filter 1-pole



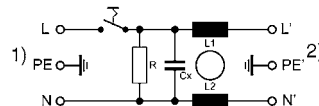
- 1) Line
- 2) Load

Standard filter 2-pole



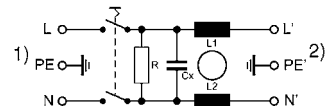
- 1) Line
- 2) Load

Medical filter 1-pole (M5)

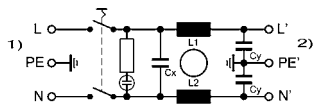


- 1) Line
- 2) Load

Medical filter 2-pole (M5)

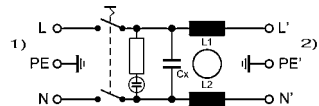


Standard filter 2-pole illuminated



- 1) Line
- 2) Load

Medical Filter 2-pole (M5) illuminated



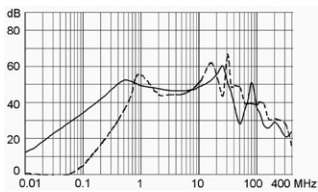
- 1) Line
- 2) Load

Attenuation Loss

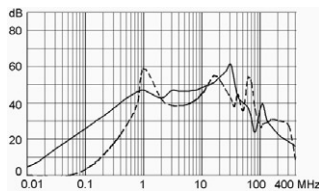
Standard version

--- differential mode ____ common mode

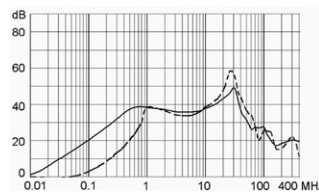
1 A



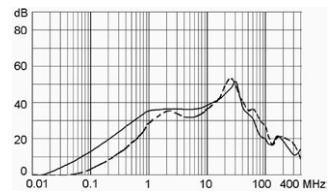
2 A



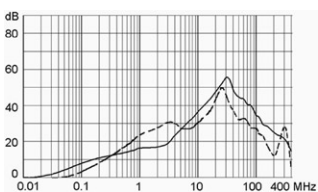
4 A



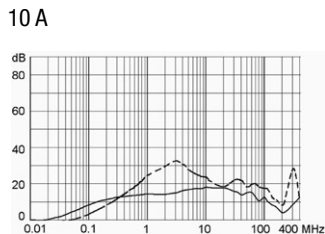
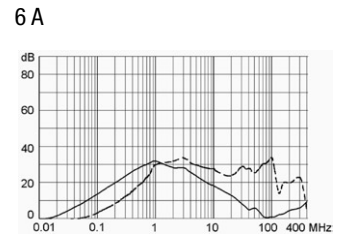
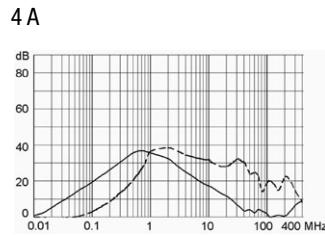
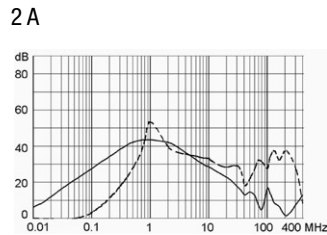
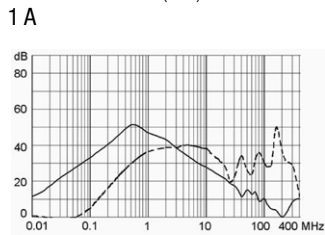
6 A



10 A



Medical version (M5)



Variants

[Distributor-Stock-Check](#) | [SCHURTER-Stock-Check](#) | [e-Store](#)

| Rated Current [A] | Filter-Type | Panel mounting | Mounting side | Line Switch | Illumination | Color | Order Number |
|-------------------|------------------|----------------|---------------|-------------|-----------------|-------|---------------|
| 1 | Standard Version | Snap-in | Front-Side | 1 pole | non-illuminated | - | DC12.1102.103 |
| 2 | Standard Version | Snap-in | Front-Side | 1 pole | non-illuminated | - | DC12.2102.103 |
| 4 | Standard Version | Snap-in | Front-Side | 1 pole | non-illuminated | - | DC12.3102.103 |
| 6 | Standard Version | Snap-in | Front-Side | 1 pole | non-illuminated | - | DC12.4102.103 |
| 10 | Standard Version | Snap-in | Front-Side | 1 pole | non-illuminated | - | DC12.5102.103 |
| 1 | Standard Version | Snap-in | Front-Side | 1 pole | illuminated | red | DC12.1122.103 |
| 1 | Standard Version | Snap-in | Front-Side | 1 pole | illuminated | green | DC12.1132.103 |
| 2 | Standard Version | Snap-in | Front-Side | 1 pole | illuminated | red | DC12.2122.103 |
| 2 | Standard Version | Snap-in | Front-Side | 1 pole | illuminated | green | DC12.2132.103 |
| 4 | Standard Version | Snap-in | Front-Side | 1 pole | illuminated | red | DC12.3122.103 |
| 4 | Standard Version | Snap-in | Front-Side | 1 pole | illuminated | green | DC12.3132.103 |
| 6 | Standard Version | Snap-in | Front-Side | 1 pole | illuminated | red | DC12.4122.103 |
| 6 | Standard Version | Snap-in | Front-Side | 1 pole | illuminated | green | DC12.4132.103 |
| 10 | Standard Version | Snap-in | Front-Side | 1 pole | illuminated | red | DC12.5122.103 |
| 10 | Standard Version | Snap-in | Front-Side | 1 pole | illuminated | green | DC12.5132.103 |
| 1 | Standard Version | Snap-in | Front-Side | 2-pole | non-illuminated | - | DC12.1102.101 |
| 2 | Standard Version | Snap-in | Front-Side | 2-pole | non-illuminated | - | DC12.2102.101 |
| 4 | Standard Version | Snap-in | Front-Side | 2-pole | non-illuminated | - | DC12.3102.101 |
| 6 | Standard Version | Snap-in | Front-Side | 2-pole | non-illuminated | - | DC12.4102.101 |
| 10 | Standard Version | Snap-in | Front-Side | 2-pole | non-illuminated | - | DC12.5102.101 |
| 1 | Standard Version | Snap-in | Front-Side | 2-pole | illuminated | red | DC12.1122.101 |
| 1 | Standard Version | Snap-in | Front-Side | 2-pole | illuminated | green | DC12.1132.101 |
| 2 | Standard Version | Snap-in | Front-Side | 2-pole | illuminated | red | DC12.2122.101 |
| 2 | Standard Version | Snap-in | Front-Side | 2-pole | illuminated | green | DC12.2132.101 |
| 4 | Standard Version | Snap-in | Front-Side | 2-pole | illuminated | red | DC12.3122.101 |
| 4 | Standard Version | Snap-in | Front-Side | 2-pole | illuminated | green | DC12.3132.101 |
| 6 | Standard Version | Snap-in | Front-Side | 2-pole | illuminated | red | DC12.4122.101 |
| 6 | Standard Version | Snap-in | Front-Side | 2-pole | illuminated | green | DC12.4132.101 |
| 10 | Standard Version | Snap-in | Front-Side | 2-pole | illuminated | red | DC12.5122.101 |
| 10 | Standard Version | Snap-in | Front-Side | 2-pole | illuminated | green | DC12.5132.101 |
| 1 | Standard Version | Screw-on | Front-Side | 1 pole | non-illuminated | - | DC12.1102.003 |
| 2 | Standard Version | Screw-on | Front-Side | 1 pole | non-illuminated | - | DC12.2102.003 |
| 4 | Standard Version | Screw-on | Front-Side | 1 pole | non-illuminated | - | DC12.3102.003 |
| 6 | Standard Version | Screw-on | Front-Side | 1 pole | non-illuminated | - | DC12.4102.003 |
| 10 | Standard Version | Screw-on | Front-Side | 1 pole | non-illuminated | - | DC12.5102.003 |
| 1 | Standard Version | Screw-on | Front-Side | 1 pole | illuminated | red | DC12.1122.003 |

| Rated Current [A] | Filter-Type | Panel mounting | Mounting side | Line Switch | Illumination | Color | Order Number |
|-------------------|----------------------|----------------|---------------|-------------|-----------------|-------|---------------|
| 1 | Standard Version | Screw-on | Front-Side | 1 pole | illuminated | green | DC12.1132.003 |
| 2 | Standard Version | Screw-on | Front-Side | 1 pole | illuminated | red | DC12.2122.003 |
| 2 | Standard Version | Screw-on | Front-Side | 1 pole | illuminated | green | DC12.2132.003 |
| 4 | Standard Version | Screw-on | Front-Side | 1 pole | illuminated | red | DC12.3122.003 |
| 4 | Standard Version | Screw-on | Front-Side | 1 pole | illuminated | green | DC12.3132.003 |
| 6 | Standard Version | Screw-on | Front-Side | 1 pole | illuminated | red | DC12.4122.003 |
| 6 | Standard Version | Screw-on | Front-Side | 1 pole | illuminated | green | DC12.4132.003 |
| 10 | Standard Version | Screw-on | Front-Side | 1 pole | illuminated | red | DC12.5122.003 |
| 10 | Standard Version | Screw-on | Front-Side | 1 pole | illuminated | green | DC12.5132.003 |
| 1 | Standard Version | Screw-on | Front-Side | 2-pole | non-illuminated | - | DC12.1102.001 |
| 2 | Standard Version | Screw-on | Front-Side | 2-pole | non-illuminated | - | DC12.2102.001 |
| 4 | Standard Version | Screw-on | Front-Side | 2-pole | non-illuminated | - | DC12.3102.001 |
| 6 | Standard Version | Screw-on | Front-Side | 2-pole | non-illuminated | - | DC12.4102.001 |
| 10 | Standard Version | Screw-on | Front-Side | 2-pole | non-illuminated | - | DC12.5102.001 |
| 1 | Standard Version | Screw-on | Front-Side | 2-pole | illuminated | red | DC12.1122.001 |
| 1 | Standard Version | Screw-on | Front-Side | 2-pole | illuminated | green | DC12.1132.001 |
| 2 | Standard Version | Screw-on | Front-Side | 2-pole | illuminated | red | DC12.2122.001 |
| 2 | Standard Version | Screw-on | Front-Side | 2-pole | illuminated | green | DC12.2132.001 |
| 4 | Standard Version | Screw-on | Front-Side | 2-pole | illuminated | red | DC12.3122.001 |
| 4 | Standard Version | Screw-on | Front-Side | 2-pole | illuminated | green | DC12.3132.001 |
| 6 | Standard Version | Screw-on | Front-Side | 2-pole | illuminated | red | DC12.4122.001 |
| 6 | Standard Version | Screw-on | Front-Side | 2-pole | illuminated | green | DC12.4132.001 |
| 10 | Standard Version | Screw-on | Front-Side | 2-pole | illuminated | red | DC12.5122.001 |
| 10 | Standard Version | Screw-on | Front-Side | 2-pole | illuminated | green | DC12.5132.001 |
| 1 | Standard Version | Screw-on | Rear-Side | 1 pole | non-illuminated | - | DC12.1102.203 |
| 2 | Standard Version | Screw-on | Rear-Side | 1 pole | non-illuminated | - | DC12.2102.203 |
| 4 | Standard Version | Screw-on | Rear-Side | 1 pole | non-illuminated | - | DC12.3102.203 |
| 6 | Standard Version | Screw-on | Rear-Side | 1 pole | non-illuminated | - | DC12.4102.203 |
| 10 | Standard Version | Screw-on | Rear-Side | 1 pole | non-illuminated | - | DC12.5102.203 |
| 1 | Standard Version | Screw-on | Rear-Side | 2-pole | non-illuminated | - | DC12.1102.201 |
| 2 | Standard Version | Screw-on | Rear-Side | 2-pole | non-illuminated | - | DC12.2102.201 |
| 4 | Standard Version | Screw-on | Rear-Side | 2-pole | non-illuminated | - | DC12.3102.201 |
| 6 | Standard Version | Screw-on | Rear-Side | 2-pole | non-illuminated | - | DC12.4102.201 |
| 10 | Standard Version | Screw-on | Rear-Side | 2-pole | non-illuminated | - | DC12.5102.201 |
| 1 | Medical Version (M5) | Snap-in | Front-Side | 1 pole | non-illuminated | - | DC12.1202.103 |
| 2 | Medical Version (M5) | Snap-in | Front-Side | 1 pole | non-illuminated | - | DC12.2202.103 |
| 4 | Medical Version (M5) | Snap-in | Front-Side | 1 pole | non-illuminated | - | DC12.3202.103 |
| 6 | Medical Version (M5) | Snap-in | Front-Side | 1 pole | non-illuminated | - | DC12.4202.103 |
| 10 | Medical Version (M5) | Snap-in | Front-Side | 1 pole | non-illuminated | - | DC12.5202.103 |
| 1 | Medical Version (M5) | Snap-in | Front-Side | 1 pole | illuminated | red | DC12.1222.103 |
| 1 | Medical Version (M5) | Snap-in | Front-Side | 1 pole | illuminated | green | DC12.1232.103 |
| 2 | Medical Version (M5) | Snap-in | Front-Side | 1 pole | illuminated | red | DC12.2222.103 |
| 2 | Medical Version (M5) | Snap-in | Front-Side | 1 pole | illuminated | green | DC12.2232.103 |
| 4 | Medical Version (M5) | Snap-in | Front-Side | 1 pole | illuminated | red | DC12.3222.103 |
| 4 | Medical Version (M5) | Snap-in | Front-Side | 1 pole | illuminated | green | DC12.3232.103 |
| 6 | Medical Version (M5) | Snap-in | Front-Side | 1 pole | illuminated | red | DC12.4222.103 |
| 6 | Medical Version (M5) | Snap-in | Front-Side | 1 pole | illuminated | green | DC12.4232.103 |
| 10 | Medical Version (M5) | Snap-in | Front-Side | 1 pole | illuminated | red | DC12.5222.103 |
| 10 | Medical Version (M5) | Snap-in | Front-Side | 1 pole | illuminated | green | DC12.5232.103 |
| 1 | Medical Version (M5) | Snap-in | Front-Side | 2-pole | non-illuminated | - | DC12.1202.101 |
| 2 | Medical Version (M5) | Snap-in | Front-Side | 2-pole | non-illuminated | - | DC12.2202.101 |
| 4 | Medical Version (M5) | Snap-in | Front-Side | 2-pole | non-illuminated | - | DC12.3202.101 |
| 6 | Medical Version (M5) | Snap-in | Front-Side | 2-pole | non-illuminated | - | DC12.4202.101 |
| 10 | Medical Version (M5) | Snap-in | Front-Side | 2-pole | non-illuminated | - | DC12.5202.101 |
| 1 | Medical Version (M5) | Snap-in | Front-Side | 2-pole | illuminated | red | DC12.1222.101 |

| Rated Current [A] | Filter-Type | Panel mounting | Mounting side | Line Switch | Illumination | Color | Order Number |
|-------------------|-----------------------|----------------|---------------|-------------|-----------------|-------|---------------|
| 1 | Medical Version (M5) | Snap-in | Front-Side | 2-pole | illuminated | green | DC12.1232.101 |
| 2 | Medical Version (M5) | Snap-in | Front-Side | 2-pole | illuminated | red | DC12.2222.101 |
| 2 | Medical Version (M5) | Snap-in | Front-Side | 2-pole | illuminated | green | DC12.2232.101 |
| 4 | Medical Version (M5) | Snap-in | Front-Side | 2-pole | illuminated | red | DC12.3222.101 |
| 4 | Medical Version (M5) | Snap-in | Front-Side | 2-pole | illuminated | green | DC12.3232.101 |
| 6 | Medical Version (M5) | Snap-in | Front-Side | 2-pole | illuminated | red | DC12.4222.101 |
| 10 | Medical Version (M5) | Snap-in | Front-Side | 2-pole | illuminated | red | DC12.5222.101 |
| 10 | Medical Version (M5) | Snap-in | Front-Side | 2-pole | illuminated | green | DC12.5232.101 |
| 1 | Medical Version (M5) | Screw-on | Front-Side | 1 pole | non-illuminated | - | DC12.1202.003 |
| 2 | Medical Version (M5) | Screw-on | Front-Side | 1 pole | non-illuminated | - | DC12.2202.003 |
| 4 | Medical Version (M5) | Screw-on | Front-Side | 1 pole | non-illuminated | - | DC12.3202.003 |
| 6 | Medical Version (M5) | Screw-on | Front-Side | 1 pole | non-illuminated | - | DC12.4202.003 |
| 10 | Medical Version (M5) | Screw-on | Front-Side | 1 pole | non-illuminated | - | DC12.5202.003 |
| 1 | Medical Version (M5) | Screw-on | Front-Side | 1 pole | illuminated | red | DC12.1222.003 |
| 1 | Medical Version (M5) | Screw-on | Front-Side | 1 pole | illuminated | green | DC12.1232.003 |
| 2 | Medical Version (M5) | Screw-on | Front-Side | 1 pole | illuminated | red | DC12.2222.003 |
| 2 | Medical Version (M5) | Screw-on | Front-Side | 1 pole | illuminated | green | DC12.2232.003 |
| 4 | Medical Version (M5) | Screw-on | Front-Side | 1 pole | illuminated | red | DC12.3222.003 |
| 4 | Medical Version (M5) | Screw-on | Front-Side | 1 pole | illuminated | green | DC12.3232.003 |
| 6 | Medical Version (M5) | Screw-on | Front-Side | 1 pole | illuminated | red | DC12.4222.003 |
| 6 | Medical Version (M5) | Screw-on | Front-Side | 1 pole | illuminated | green | DC12.4232.003 |
| 10 | Medical Version (M5) | Screw-on | Front-Side | 1 pole | illuminated | red | DC12.5222.003 |
| 10 | Medical Version (M5) | Screw-on | Front-Side | 1 pole | illuminated | green | DC12.5232.003 |
| 1 | Medical Version (M5) | Screw-on | Front-Side | 2-pole | non-illuminated | - | DC12.1202.001 |
| 2 | Medical Version (M5) | Screw-on | Front-Side | 2-pole | non-illuminated | - | DC12.2202.001 |
| 4 | Medical Version (M5) | Screw-on | Front-Side | 2-pole | non-illuminated | - | DC12.3202.001 |
| 6 | Medical Version (M5) | Screw-on | Front-Side | 2-pole | non-illuminated | - | DC12.4202.001 |
| 10 | Medical Version (M5) | Screw-on | Front-Side | 2-pole | non-illuminated | - | DC12.5202.001 |
| 1 | Medical Version (M5) | Screw-on | Front-Side | 2-pole | illuminated | red | DC12.1222.001 |
| 1 | Medical Version (M5) | Screw-on | Front-Side | 2-pole | illuminated | green | DC12.1232.001 |
| 2 | Medical Version (M5) | Screw-on | Front-Side | 2-pole | illuminated | red | DC12.2222.001 |
| 2 | Medical Version (M5) | Screw-on | Front-Side | 2-pole | illuminated | green | DC12.2232.001 |
| 4 | Medical Version (M5) | Screw-on | Front-Side | 2-pole | illuminated | red | DC12.3222.001 |
| 4 | Medical Version (M5) | Screw-on | Front-Side | 2-pole | illuminated | green | DC12.3232.001 |
| 6 | Medical Version (M5) | Screw-on | Front-Side | 2-pole | illuminated | red | DC12.4222.001 |
| 6 | Medical Version (M5) | Screw-on | Front-Side | 2-pole | illuminated | green | DC12.4232.001 |
| 10 | Medical Version (M5) | Screw-on | Front-Side | 2-pole | illuminated | red | DC12.5222.001 |
| 10 | Medical Version (M5) | Screw-on | Front-Side | 2-pole | illuminated | green | DC12.5232.001 |
| 1 | Medical Version (M5) | Screw-on | Rear-Side | 2-pole | non-illuminated | - | DC12.1202.201 |
| 2 | Medical Version (M5) | Screw-on | Rear-Side | 2-pole | non-illuminated | - | DC12.2202.201 |
| 4 | Medical Version (M5) | Screw-on | Rear-Side | 2-pole | non-illuminated | - | DC12.3202.201 |
| 6 | Medical Version (M5) | Screw-on | Rear-Side | 2-pole | non-illuminated | - | DC12.4202.201 |
| 10 | Medical Version (M5) | Screw-on | Rear-Side | 2-pole | non-illuminated | - | DC12.5202.201 |
| 1 | Medical Version (M80) | Screw-on | Rear-Side | 2-pole | non-illuminated | - | DC12.1602.201 |
| 2 | Medical Version (M80) | Screw-on | Rear-Side | 2-pole | non-illuminated | - | DC12.2602.201 |
| 4 | Medical Version (M80) | Screw-on | Rear-Side | 2-pole | non-illuminated | - | DC12.3602.201 |
| 6 | Medical Version (M80) | Screw-on | Rear-Side | 2-pole | non-illuminated | - | DC12.4602.201 |
| 10 | Medical Version (M80) | Screw-on | Rear-Side | 2-pole | non-illuminated | - | DC12.5602.201 |

Packaging unit 10 Pcs

Accessory

Description



Assorted Covers
Rear Cover

0859.0075



Cord retaining kits
Cord retaining strain relieve

Flat head, A

4700.0001

Countersunk, B

4700.0002